



COMUNE DI ROSIGNANO M.MO  
PROVINCIA DI LIVORNO

Sindaco: *Alessandro Franchi*  
Assessore alla Programmazione del Territorio, Demanio Marittimo: *Margherita Pia*  
Dirigente del Settore Programmazione e Sviluppo del territorio: *Andrea Immorali*  
Responsabile del procedimento e dell'U.O. pianificazione: *Stefania Marcellini*  
Garante della comunicazione: *Daniela Ronconi*

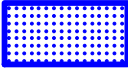
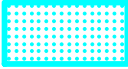


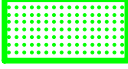


## ART. 95, C.3, LETT.G LRT 65/2014: BENI SOGGETTI A VINCOLO AI FINI ESPROPRIATIVI AI SENSI DEGLI ARTICOLI 9 E 10 DEL DPR 327/2001

LUGLIO 2017

Pr **ESP**  
FASCICOLO

CARTOGRAFIA COSTITUITA DA N° 16 TAVOLE CON INQUADRAMENTI A SCALE VARIE

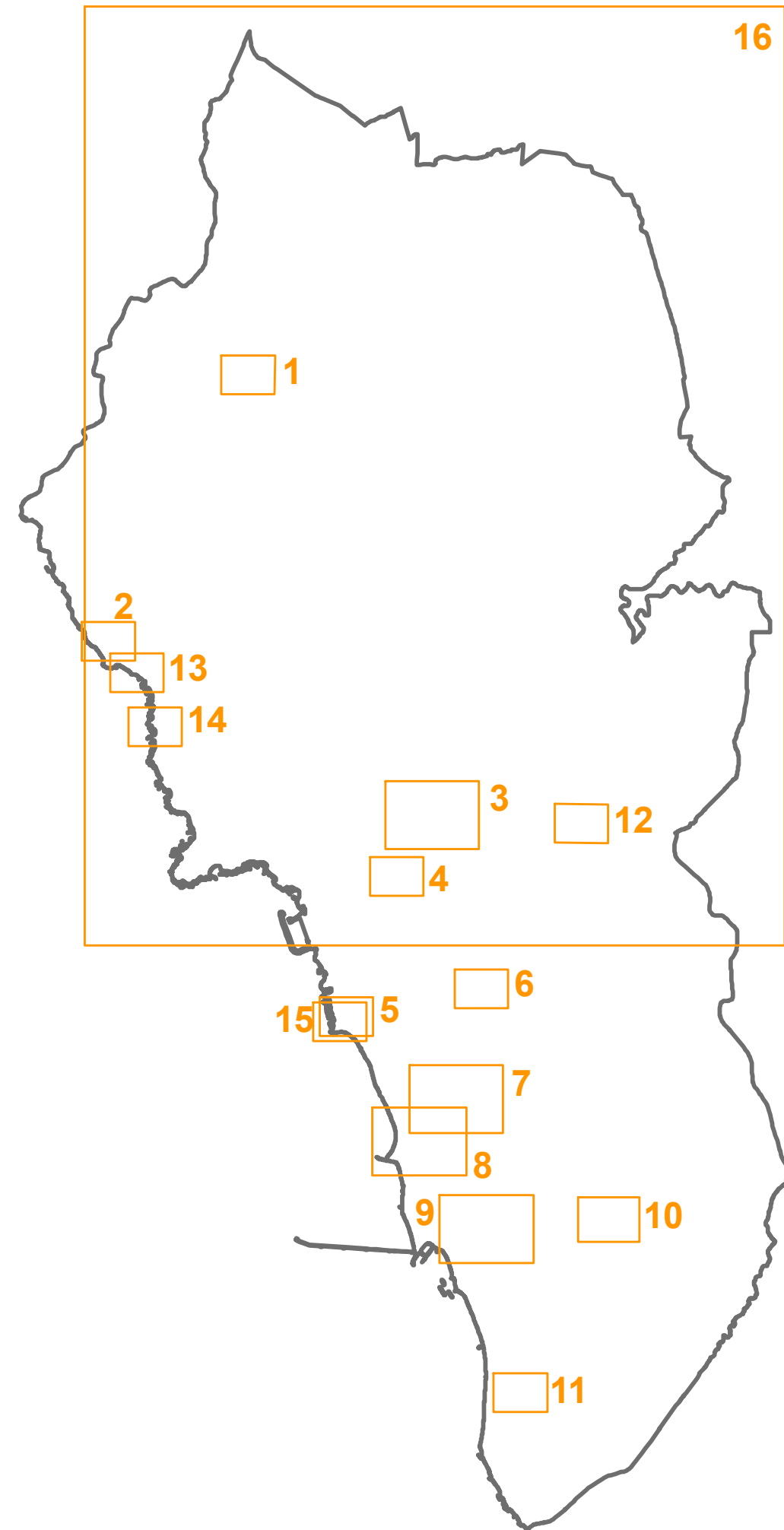
## Legenda

-  Aree ed edifici per funzioni speciali
-  Aree per opere idrauliche
-  Aree per parcheggi pubblici
-  Strade in progetto o adeguamento
-  Aree per il verde pubblico
-  Accessi al demanio
-  Sentiero 00

## Quadro d'unione

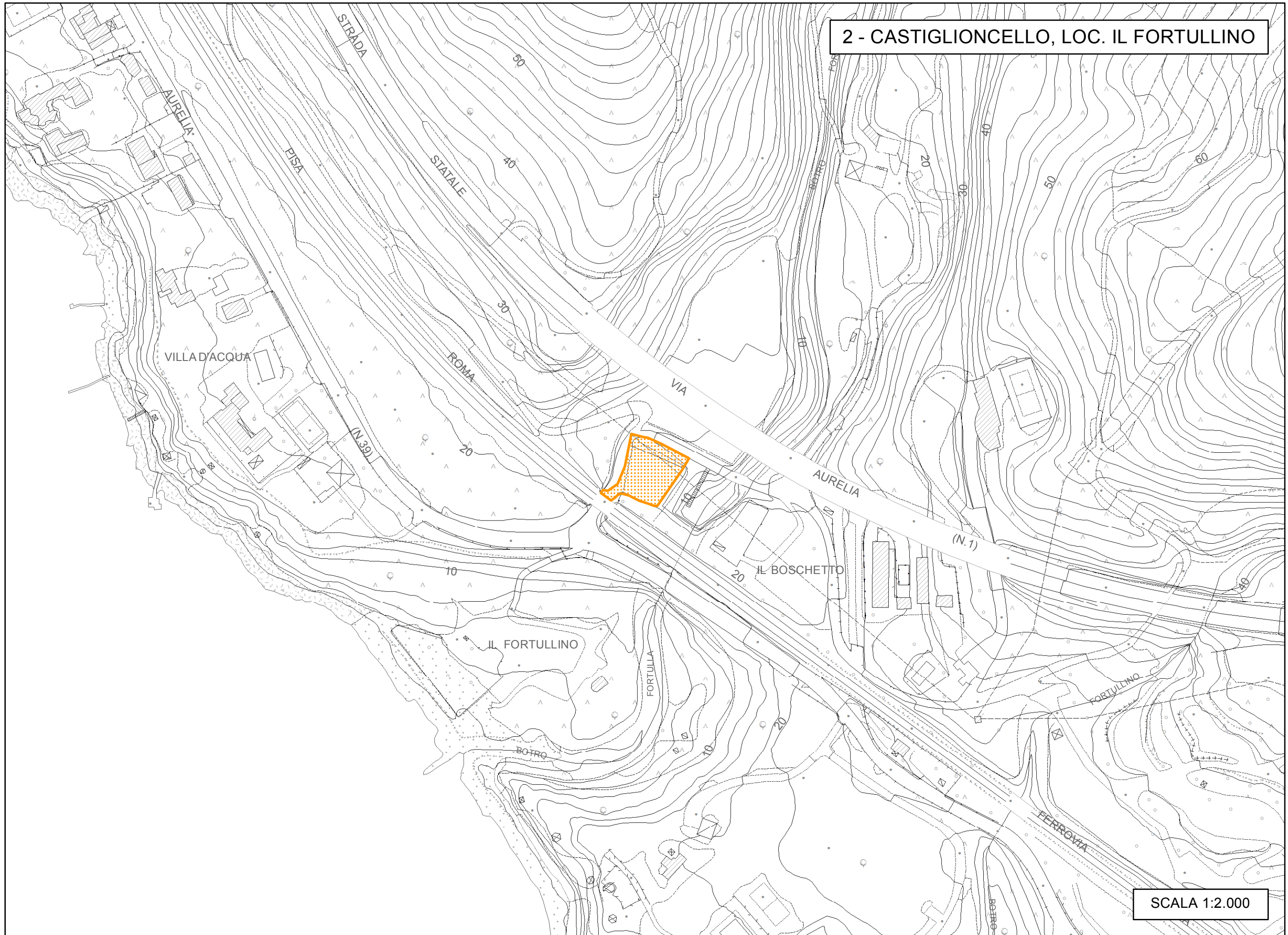
- 1 - NIBBIAIA
- 2 - CASTIGLIONCELLO, LOC. IL FORTULLINO
- 3 - ROSIGNANO SOLVAY, VIA DI SERRAGRANDE
- 4 - ROSIGNANO SOLVAY, LOC. COTONE
- 5 - ROSIGNANO SOLVAY, VIA P. GIGLI
- 6 - ROSIGNANO SOLVAY, VIA R. FILIDEI
- 7 - ROSIGNANO SOLVAY, FIUME FINE
- 8 - ROSIGNANO SOLVAY, FIUME FINE
- 9 - VADA, FOSSO VALLE CORSA
- 10 - VADA, VIA DELLA TORRE
- 11 - VADA, VIA DEL NOVANTA
- 12 - ROSIGNANO MARITTIMO
- 13 - CASTIGLIONCELLO, LOC. ARANCIO
- 14 - CASTIGLIONCELLO, LOC. LE FORBICI
- 15 - ROSIGNANO SOLVAY, LILLATRO
- 16 - SENTIERO 00

## Scale varie



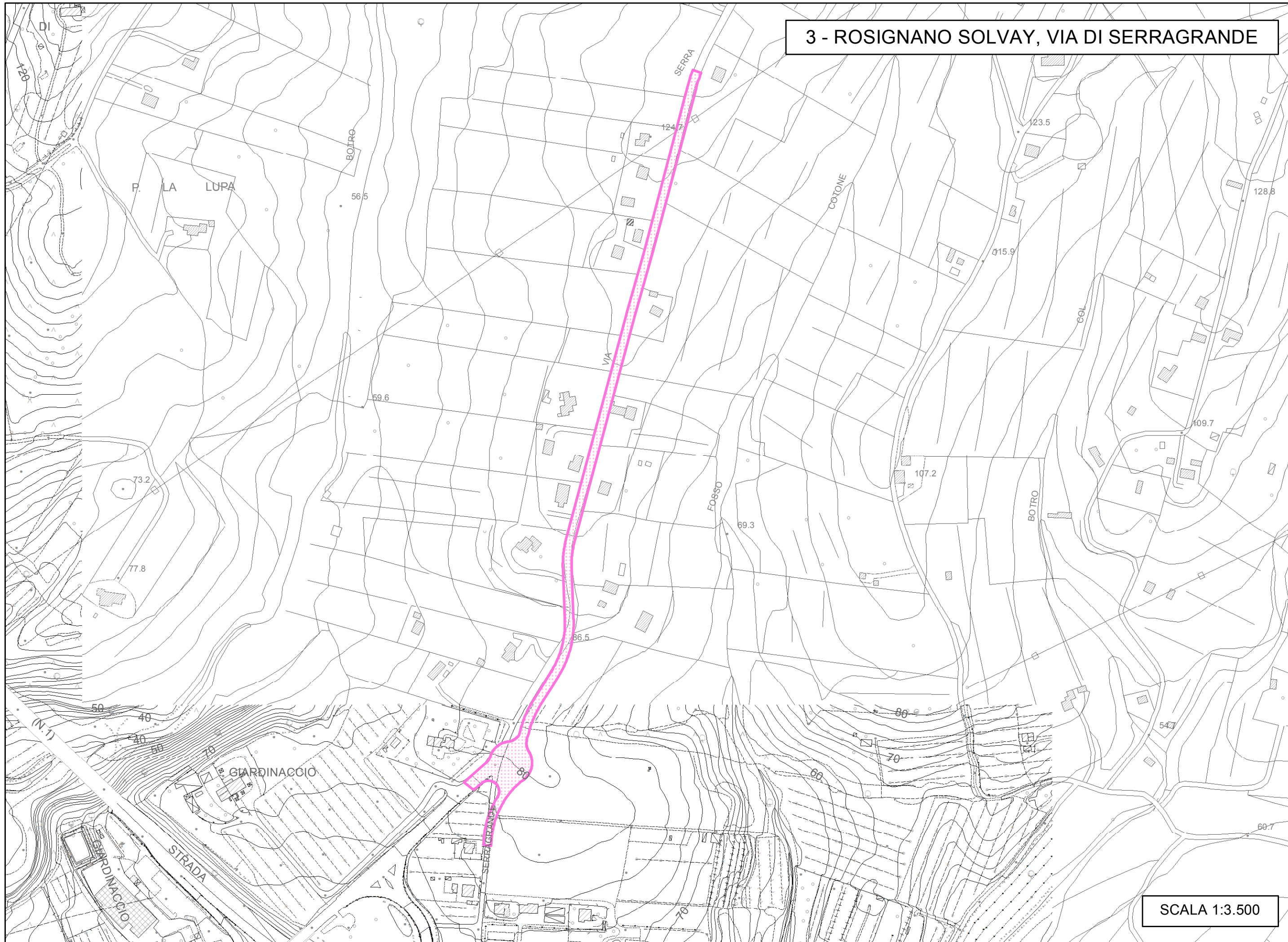


2 - CASTIGLIONCELLO, LOC. IL FORTULLINO



SCALA 1:2.000

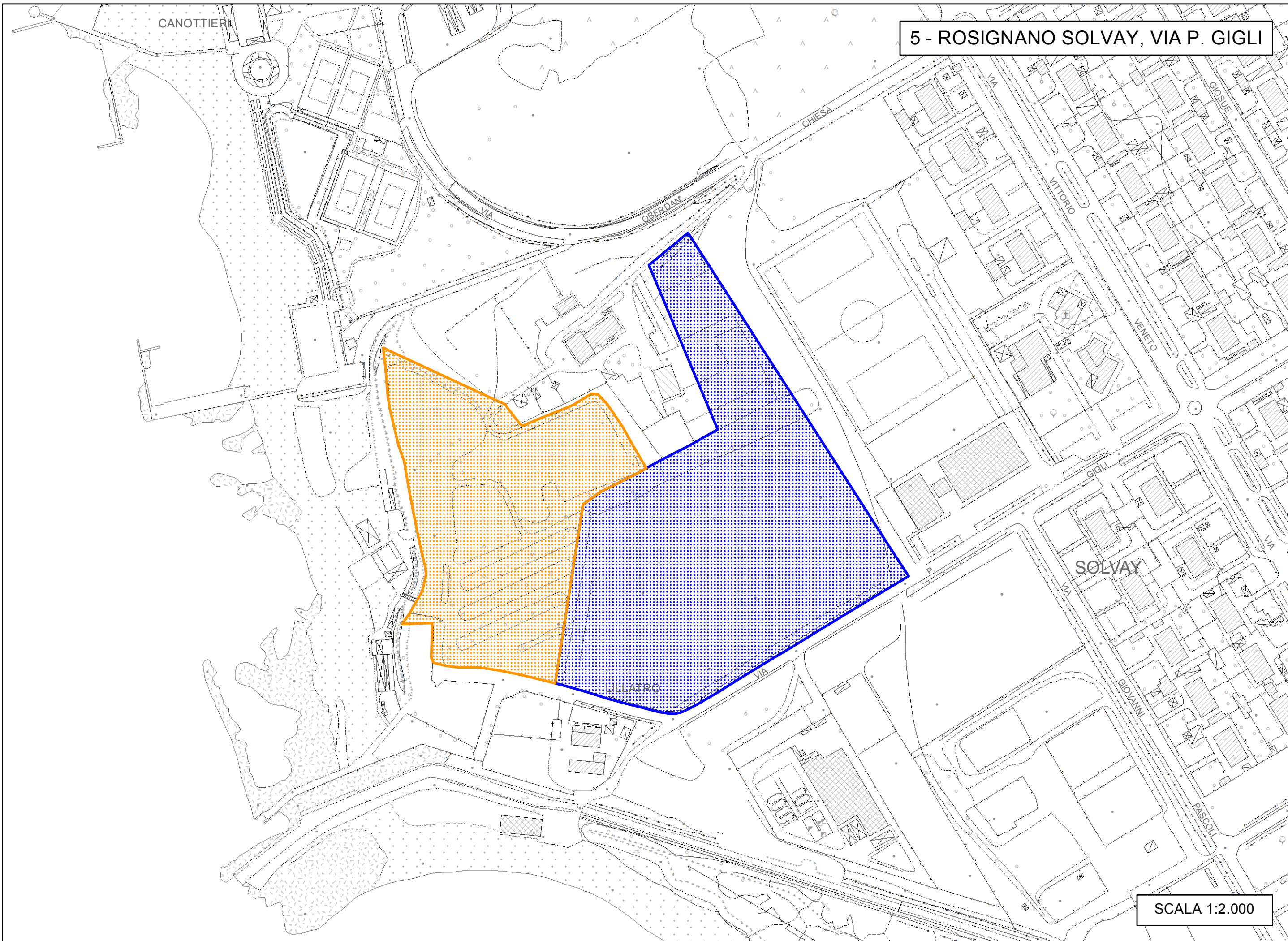
3 - ROSIGNANO SOLVAY, VIA DI SERRAGRANDE



SCALA 1:3.500

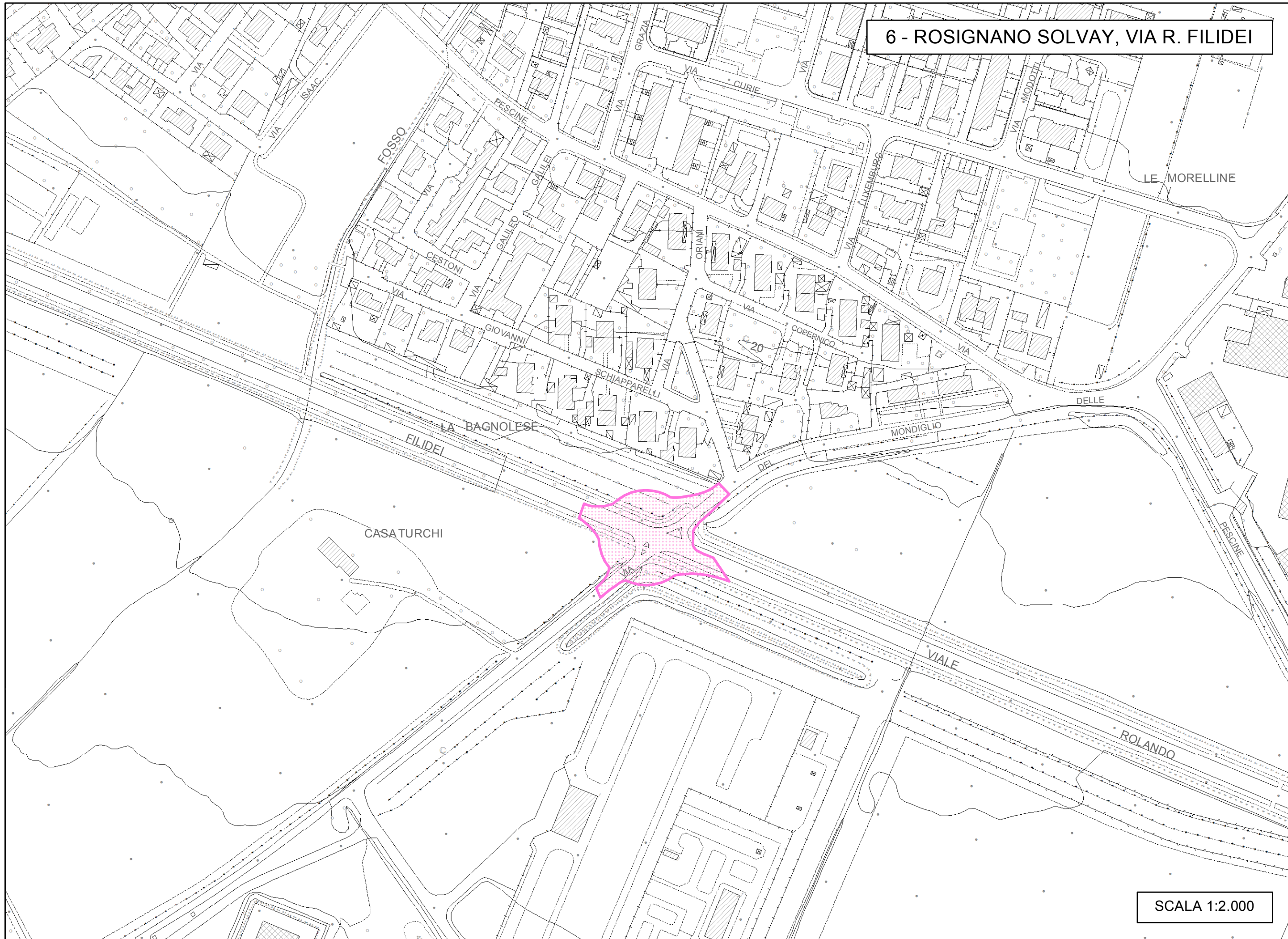


5 - ROSIGNANO SOLVAY, VIA P. GIGLI



SCALA 1:2.000

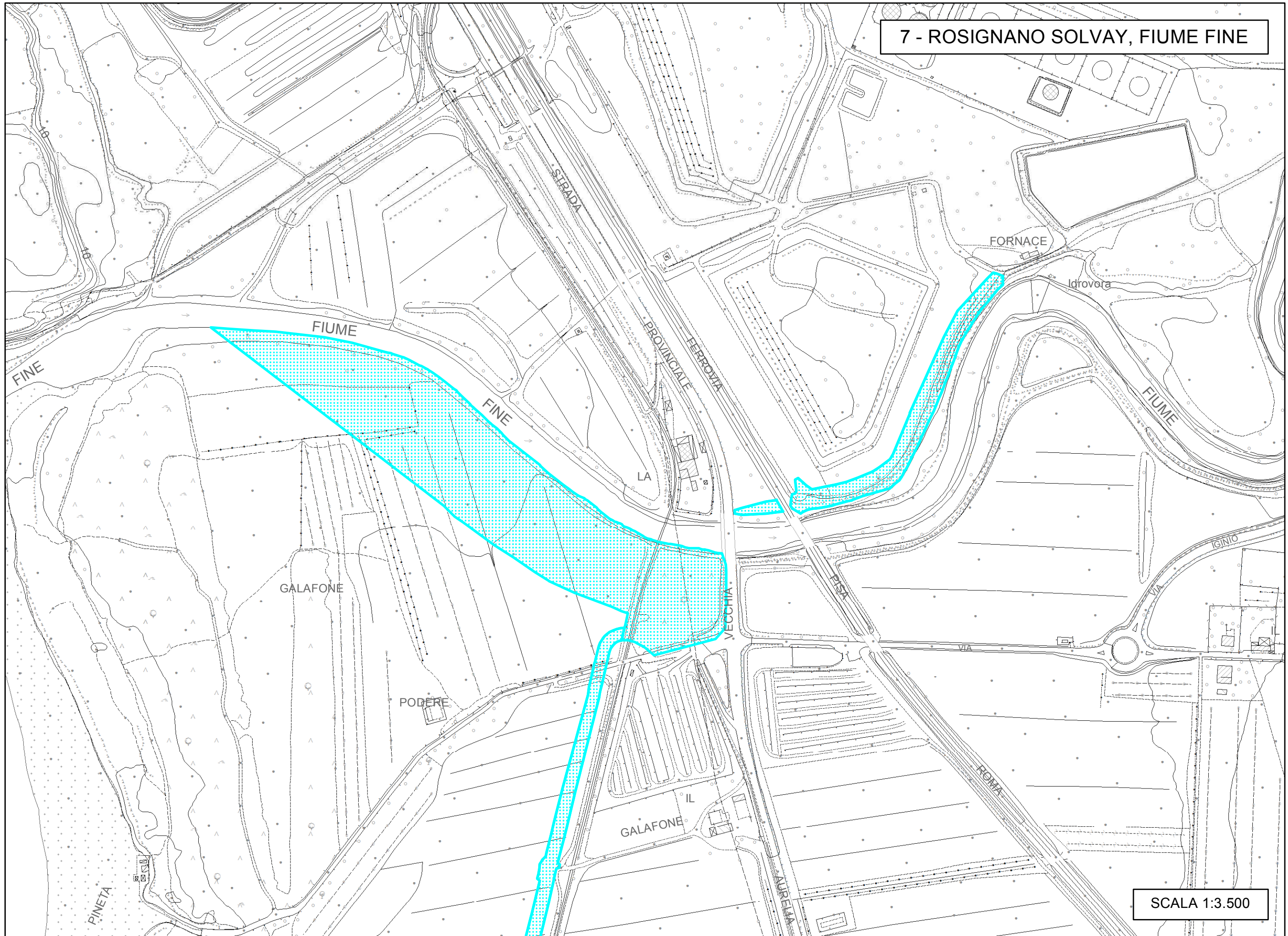
6 - ROSIGNANO SOLVAY, VIA R. FILIDEI



SCALA 1:2.000

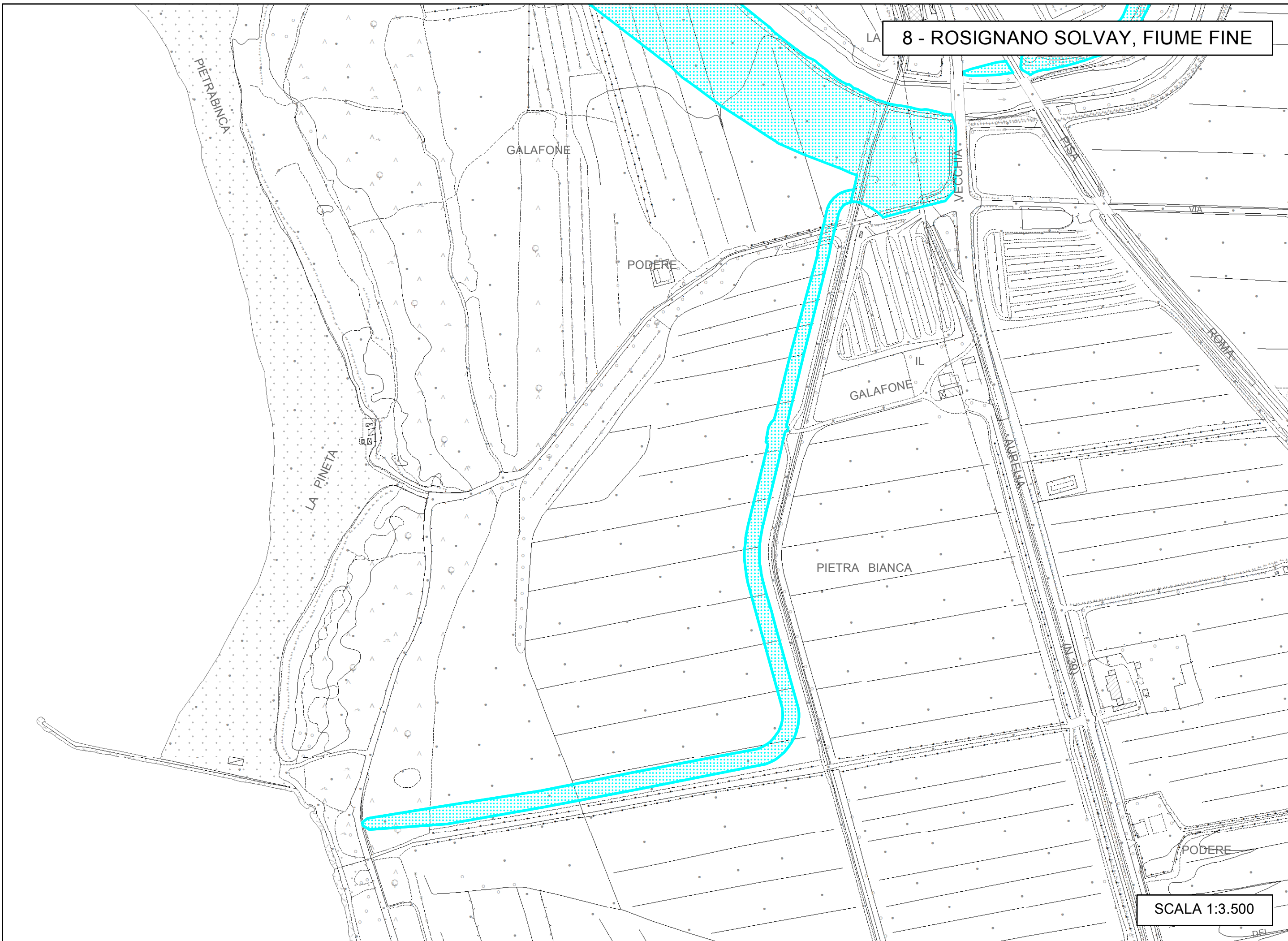


7 - ROSIGNANO SOLVAY, FIUME FINE



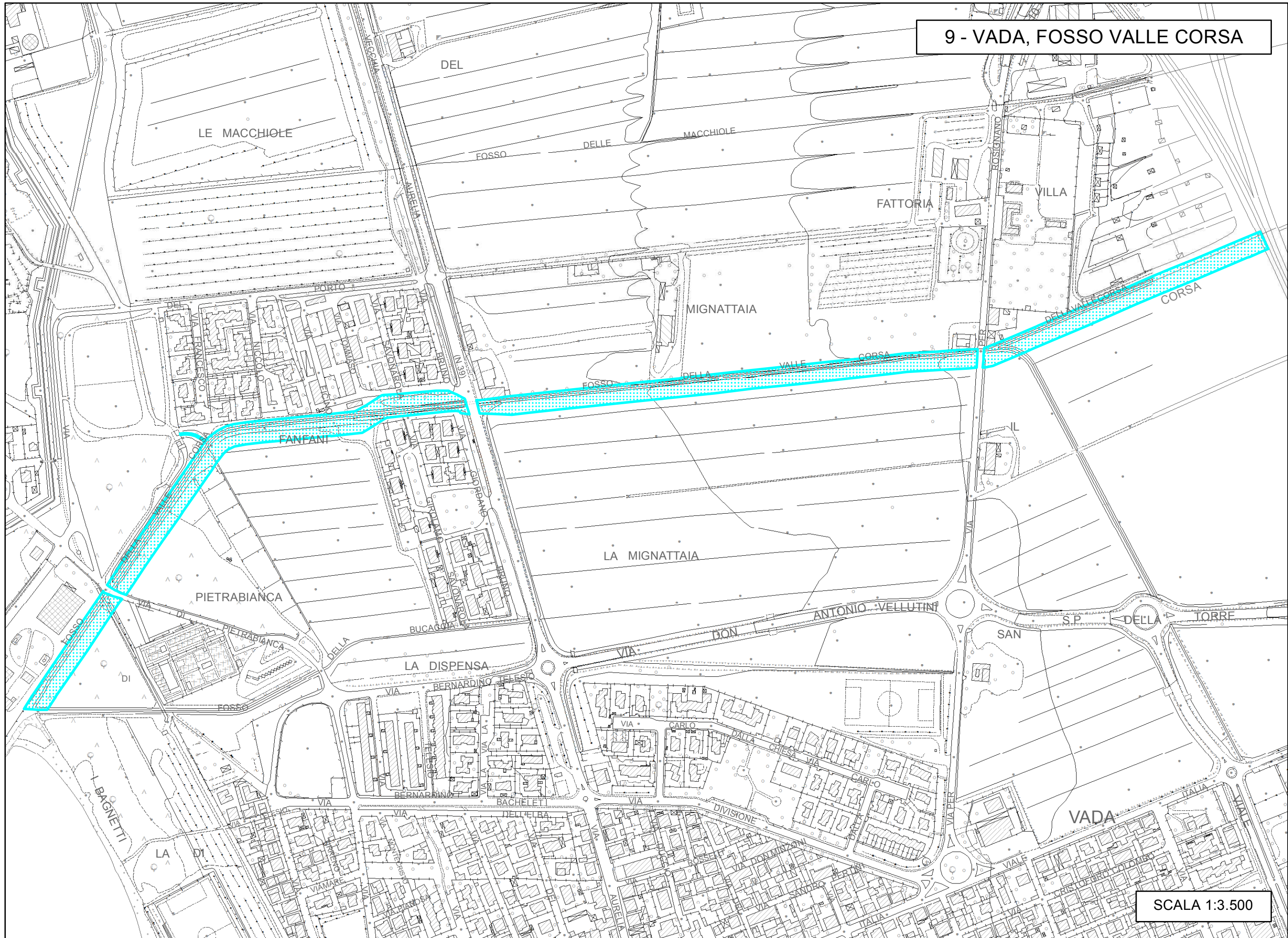
SCALA 1:3.500

8 - ROSIGNANO SOLVAY, FIUME FINE



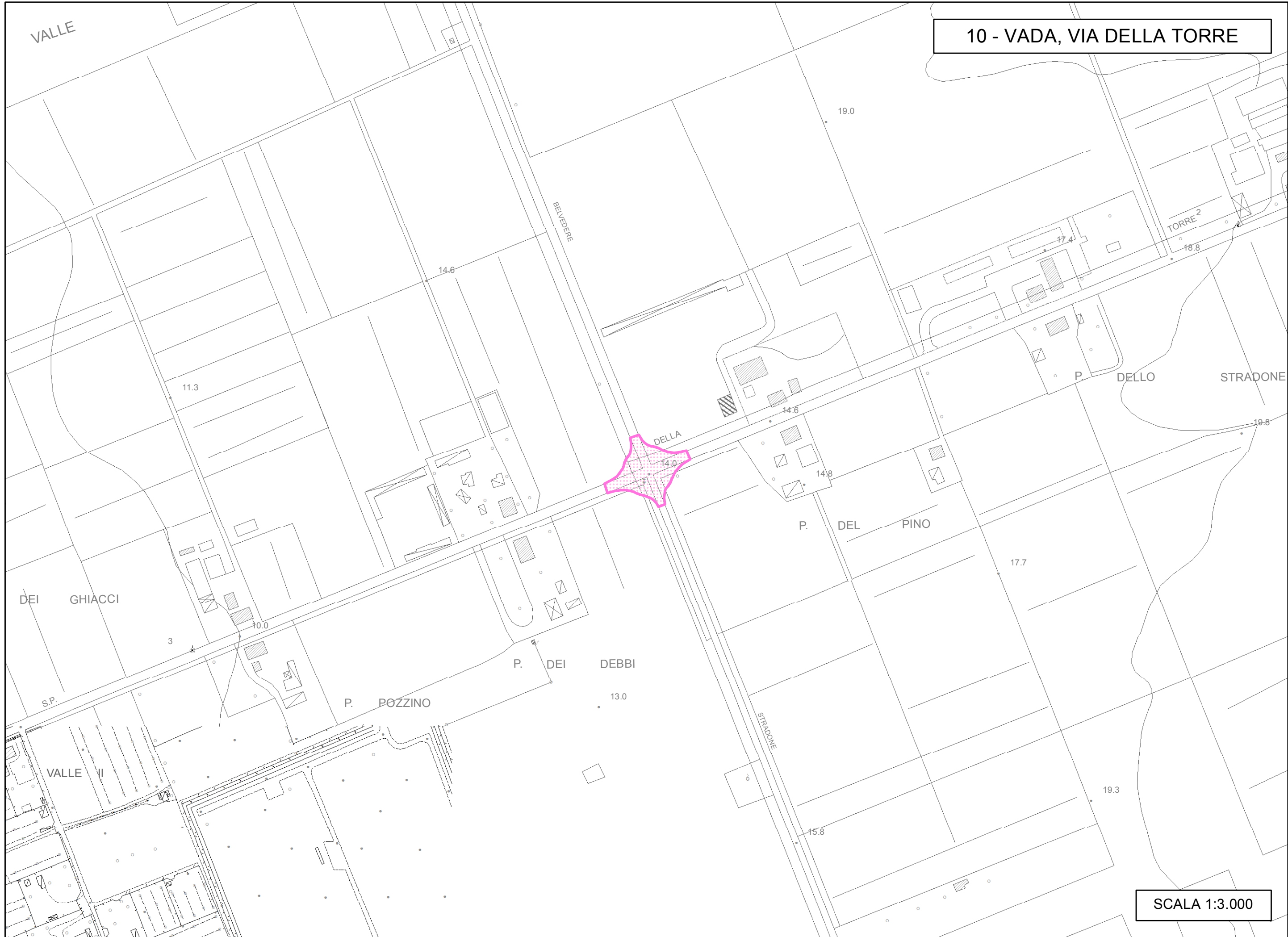
SCALA 1:3.500

9 - VADA, FOSSO VALLE CORSA



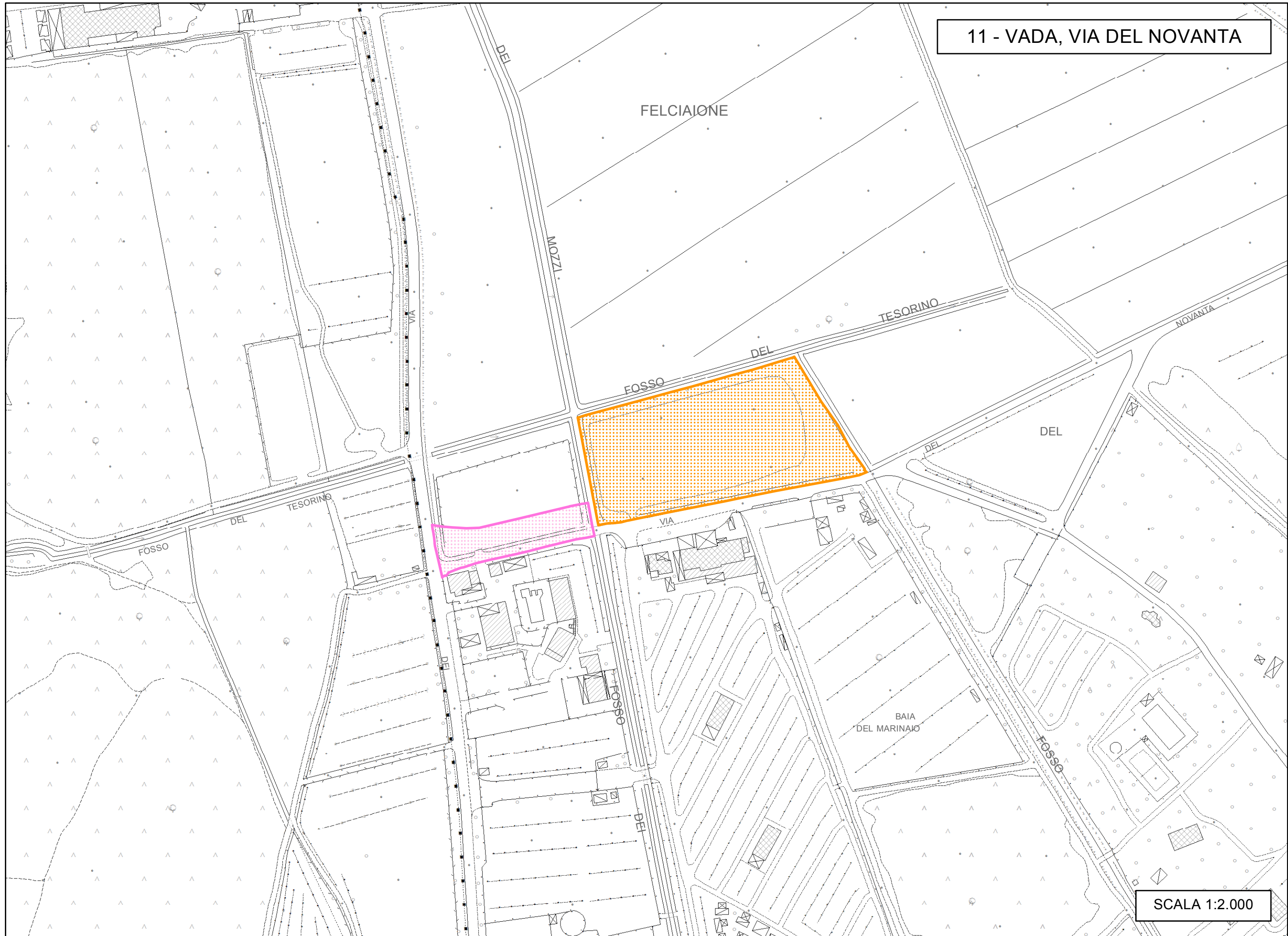
SCALA 1:3.500

10 - VADA, VIA DELLA TORRE



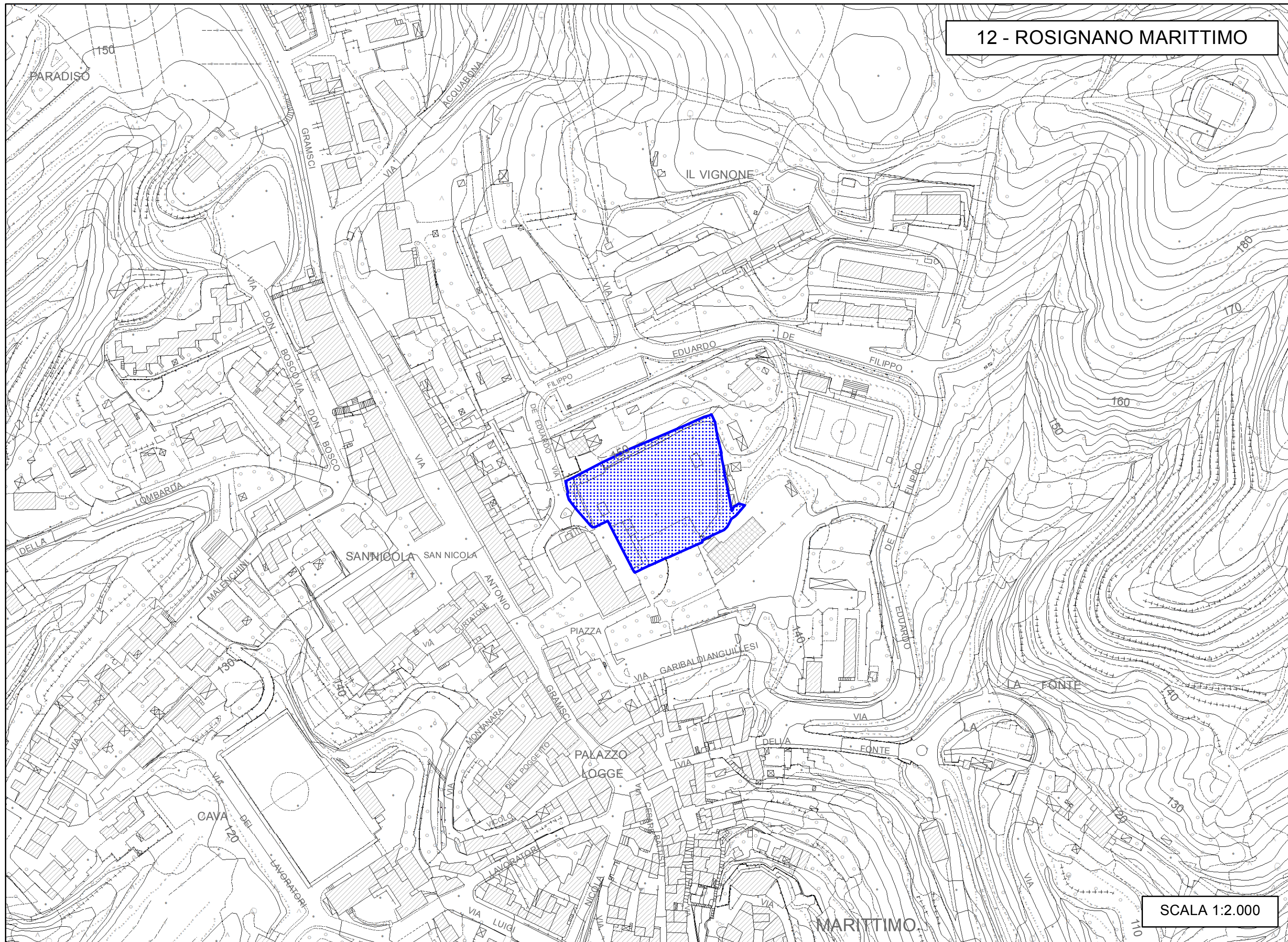
SCALA 1:3.000

11 - VADA, VIA DEL NOVANTA



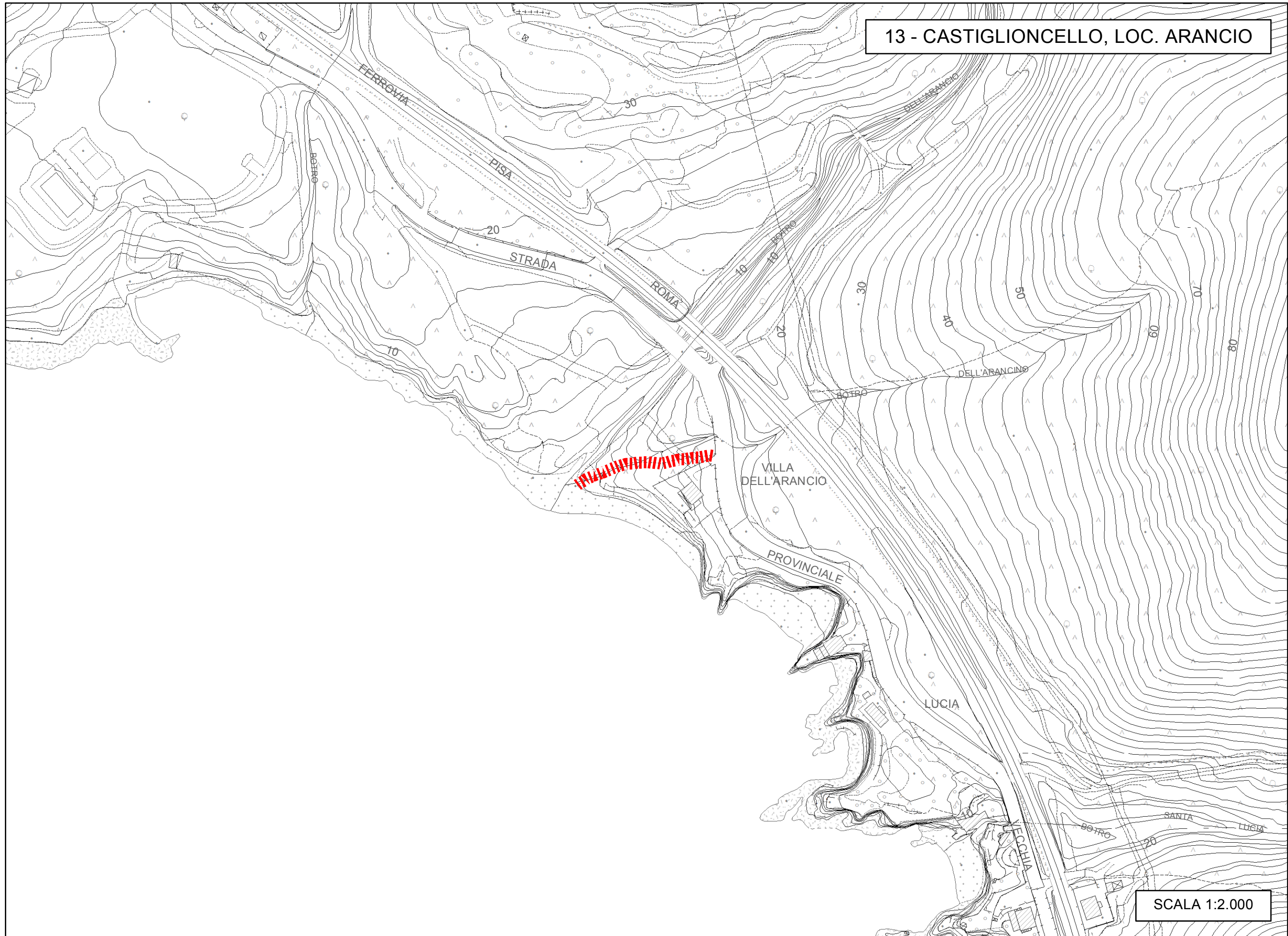
SCALA 1:2.000

12 - ROSIGNANO MARITTIMO



SCALA 1:2.000

13 - CASTIGLIONCELLO, LOC. ARANCIO



SCALA 1:2.000

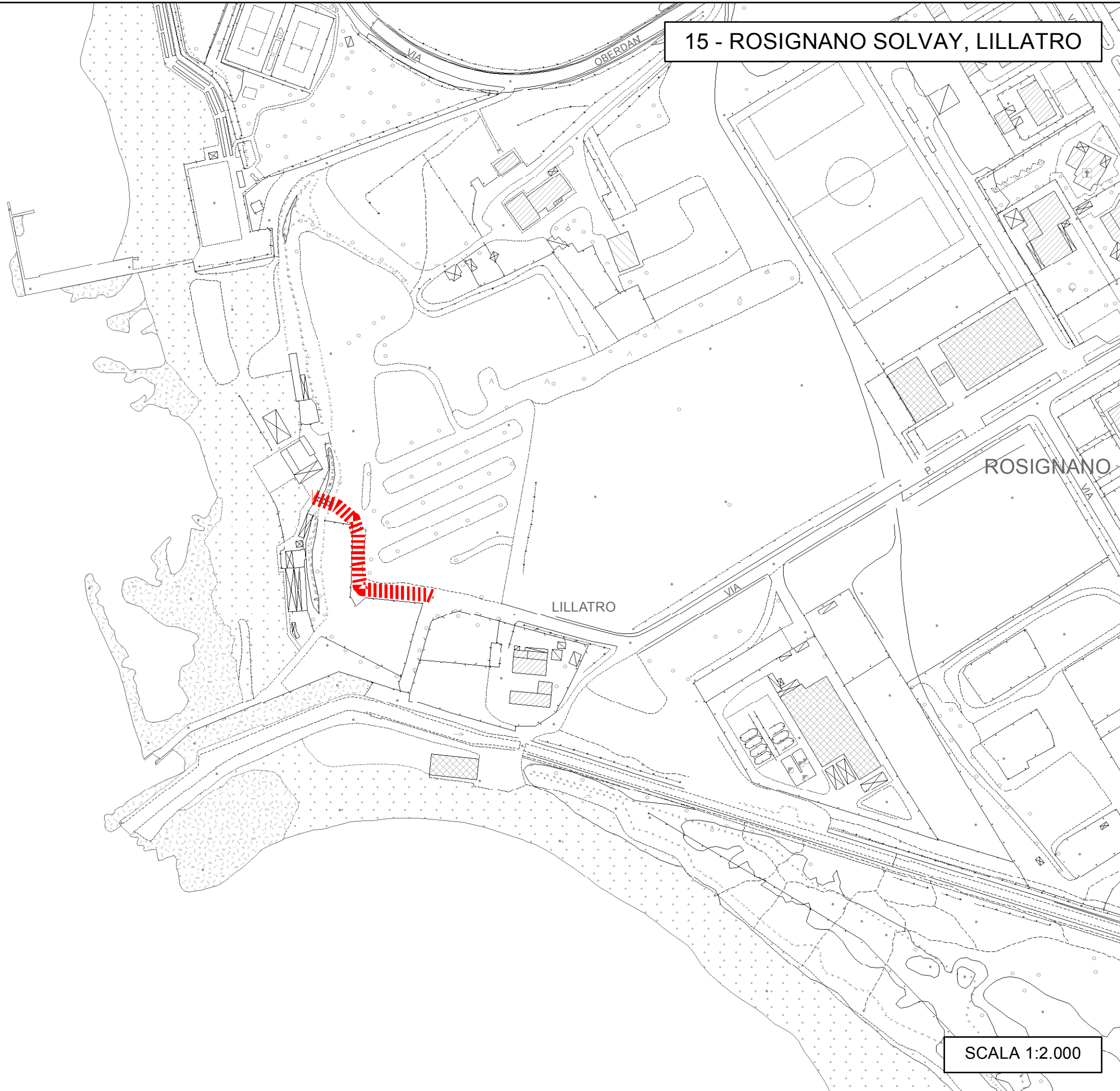
14 - CASTIGLIONCELLO, LOC. LE FORBICI



SCALA 1:2.000



15 - ROSIGNANO SOLVAY, LILLATRO



SCALA 1:2.000

