



# NORME TECNICHE DI ATTUAZIONE

## ALLEGATO 3.1

**“Patrimonio edilizio esistente  
di particolare valore storico,  
artistico, architettonico”**

**ELABORATI GRAFICI  
fascicolo 3**

## Legenda

**n** Numero scheda di riferimento

Classificazione del patrimonio edilizio esistente di particolare valore storico, artistico, architettonico:

- Aree o immobili di particolare interesse artistico, storico, archeologico o etnoantropologico D.L.gs 42/04, art. 10, comma 1
- Restauro e risanamento conservativo così come descritto nelle NTA
- Ristrutturazione edilizia conservativa R1-R2 così come descritta nelle NTA
- Ristrutturazione edilizia conservativa R3 così come descritta nelle NTA
- Addizioni volumetriche specifiche per Villaggio Solvay

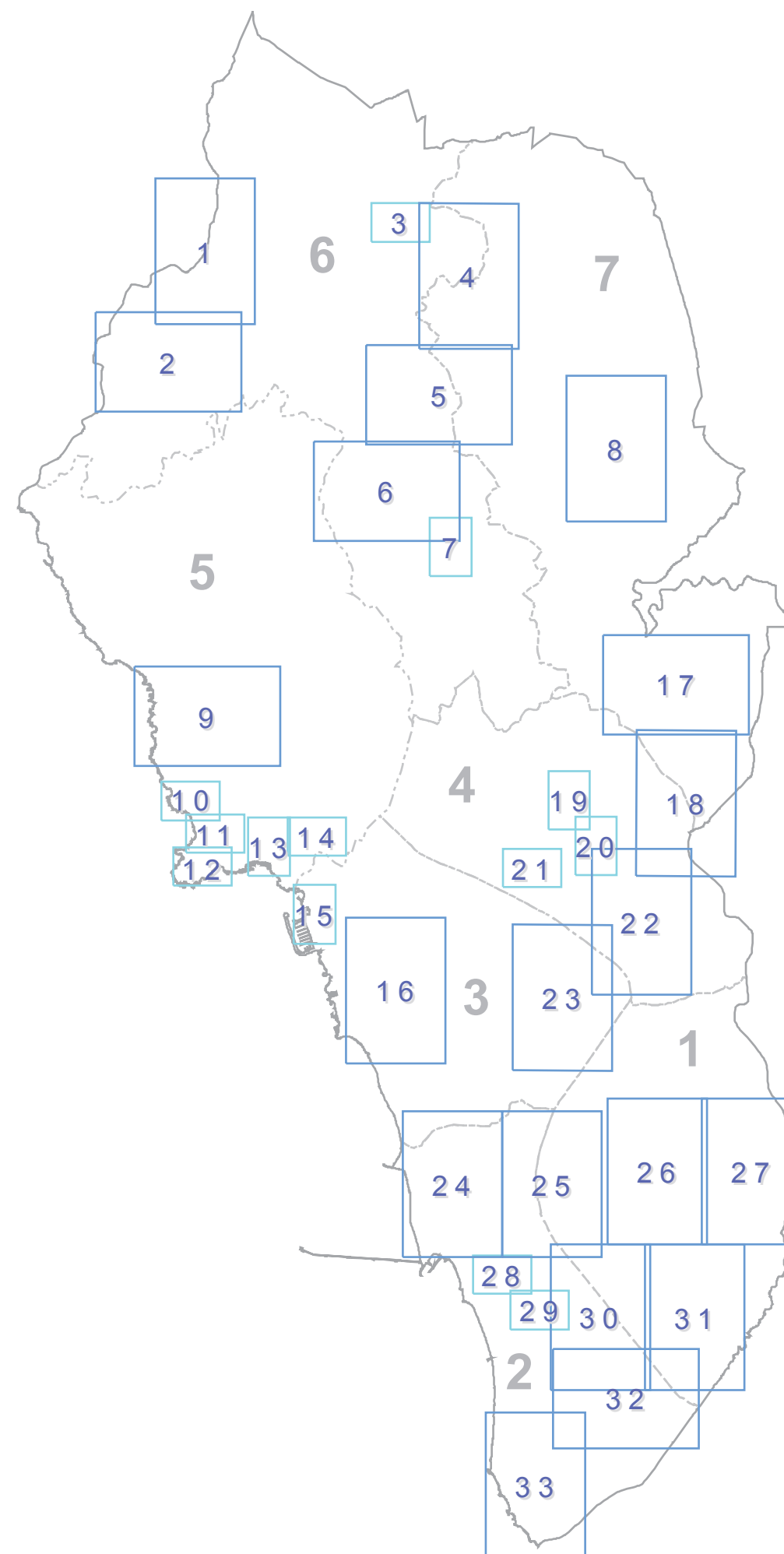
Aree di valore storico da tutelare

U.T.O.E.

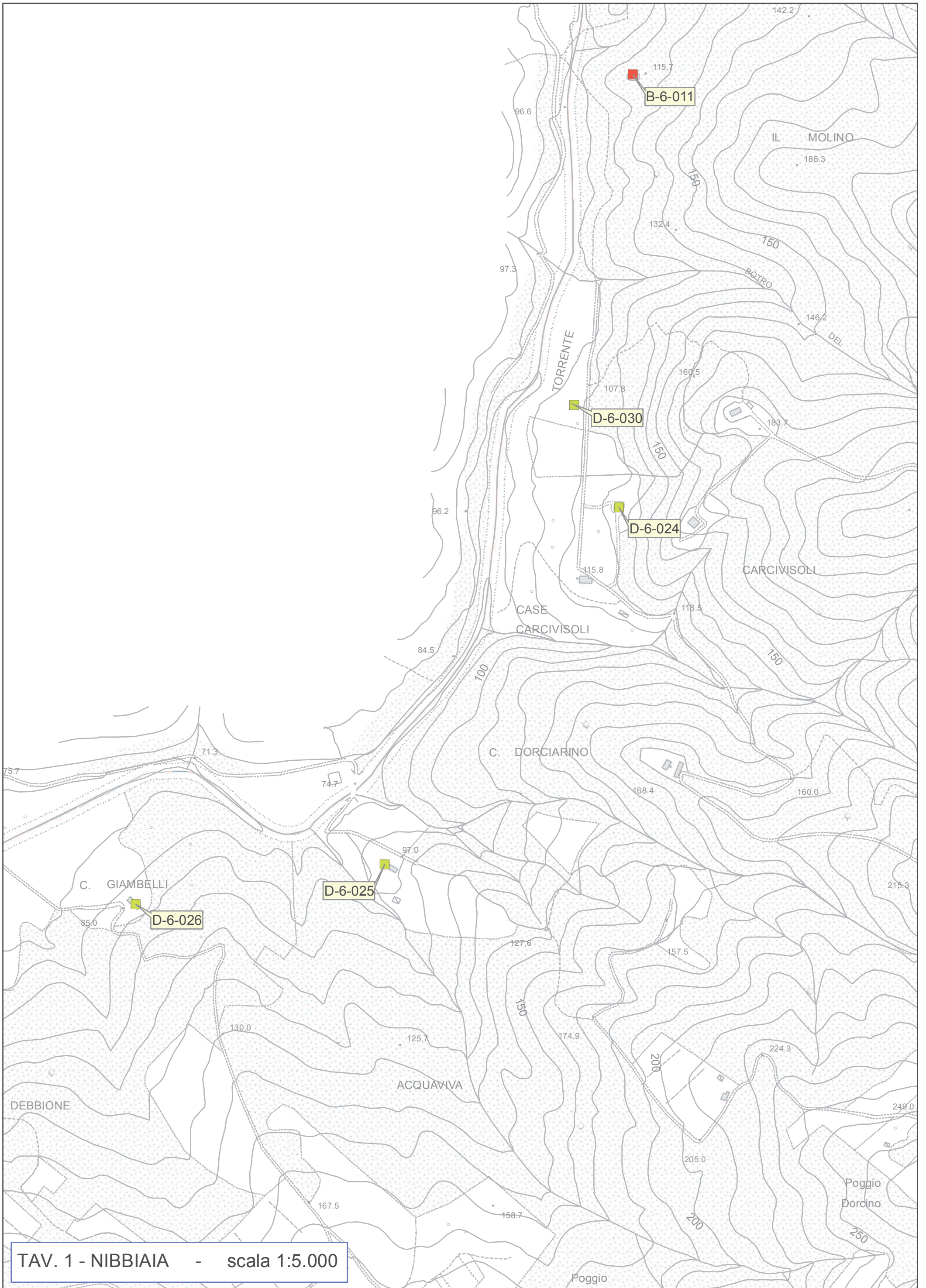
## Quadro d'unione

inquadramento in scala 1:2.000

inquadramento in scala 1:5.000

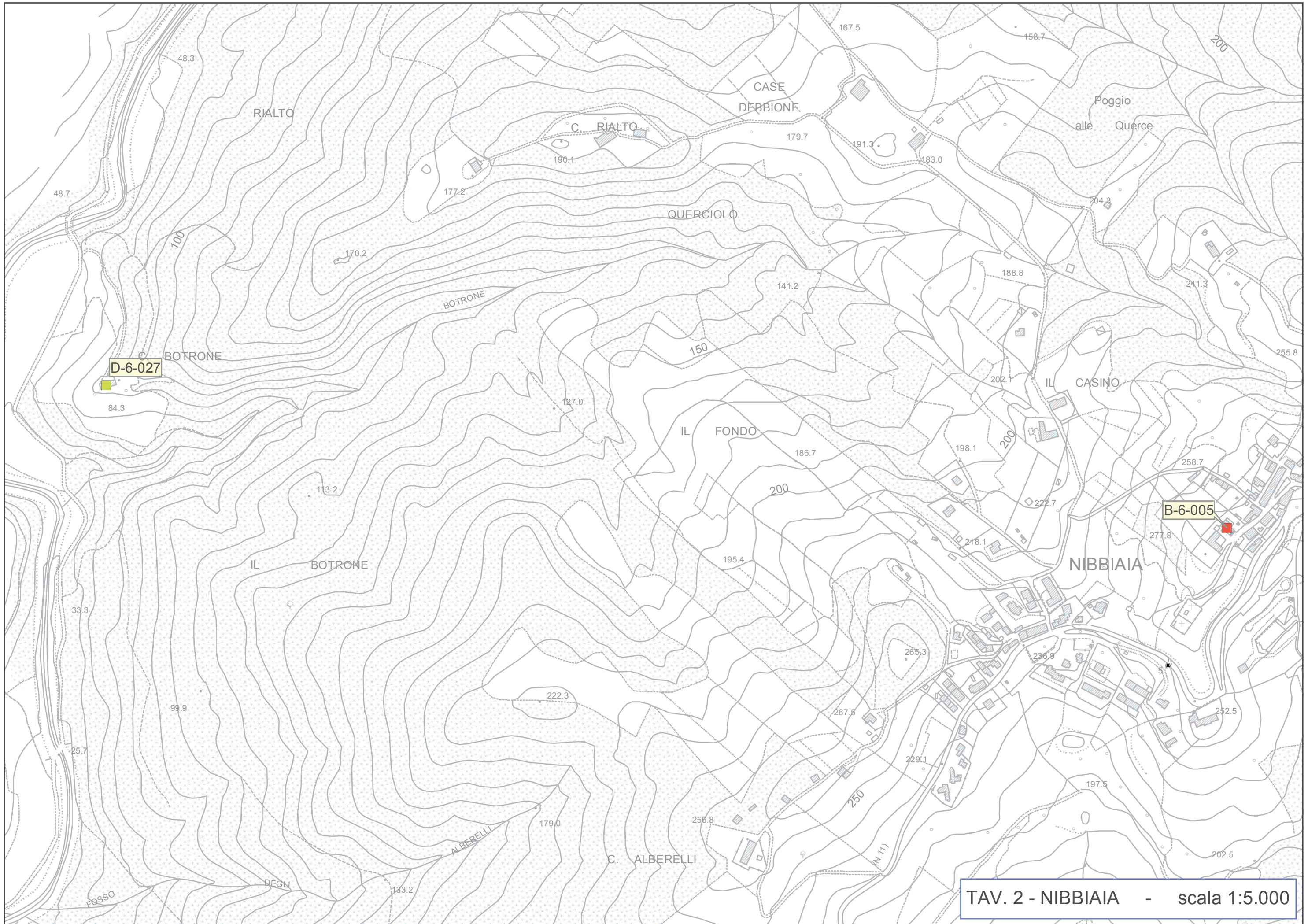






TAV. 1 - NIBBIAIA - scala 1:5.000



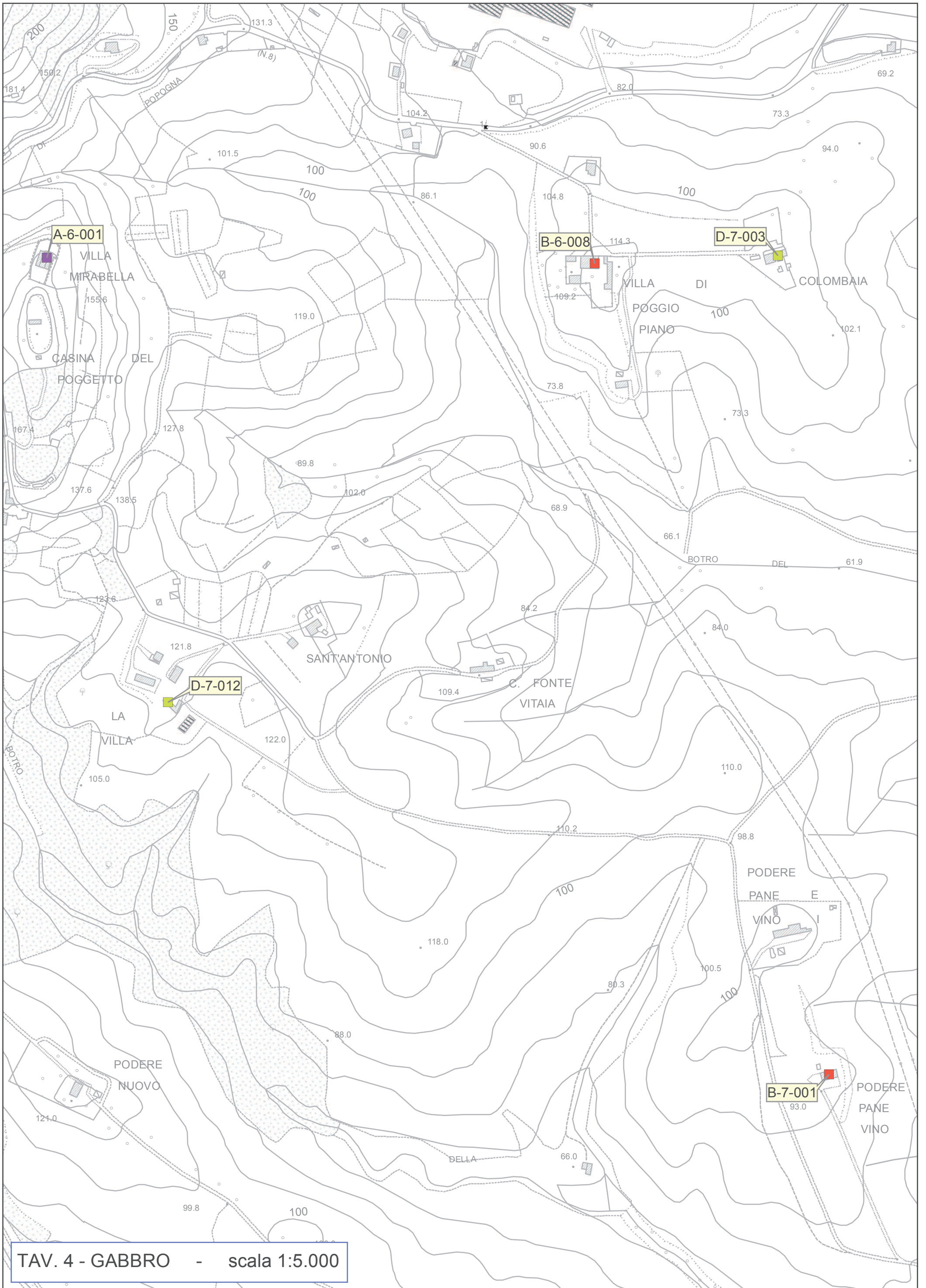


TAV. 2 - NIBBIAIA - scala 1:5.000



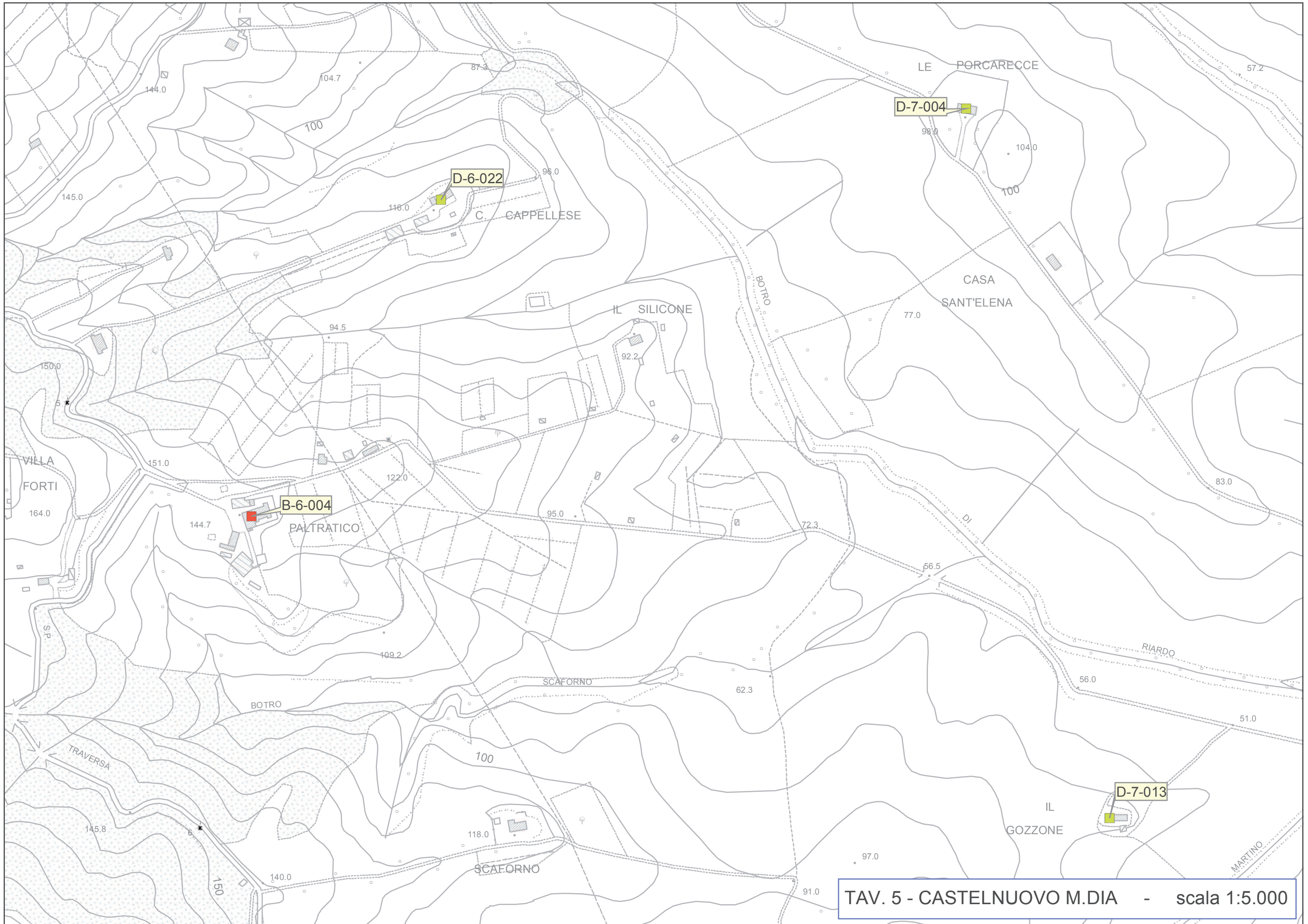






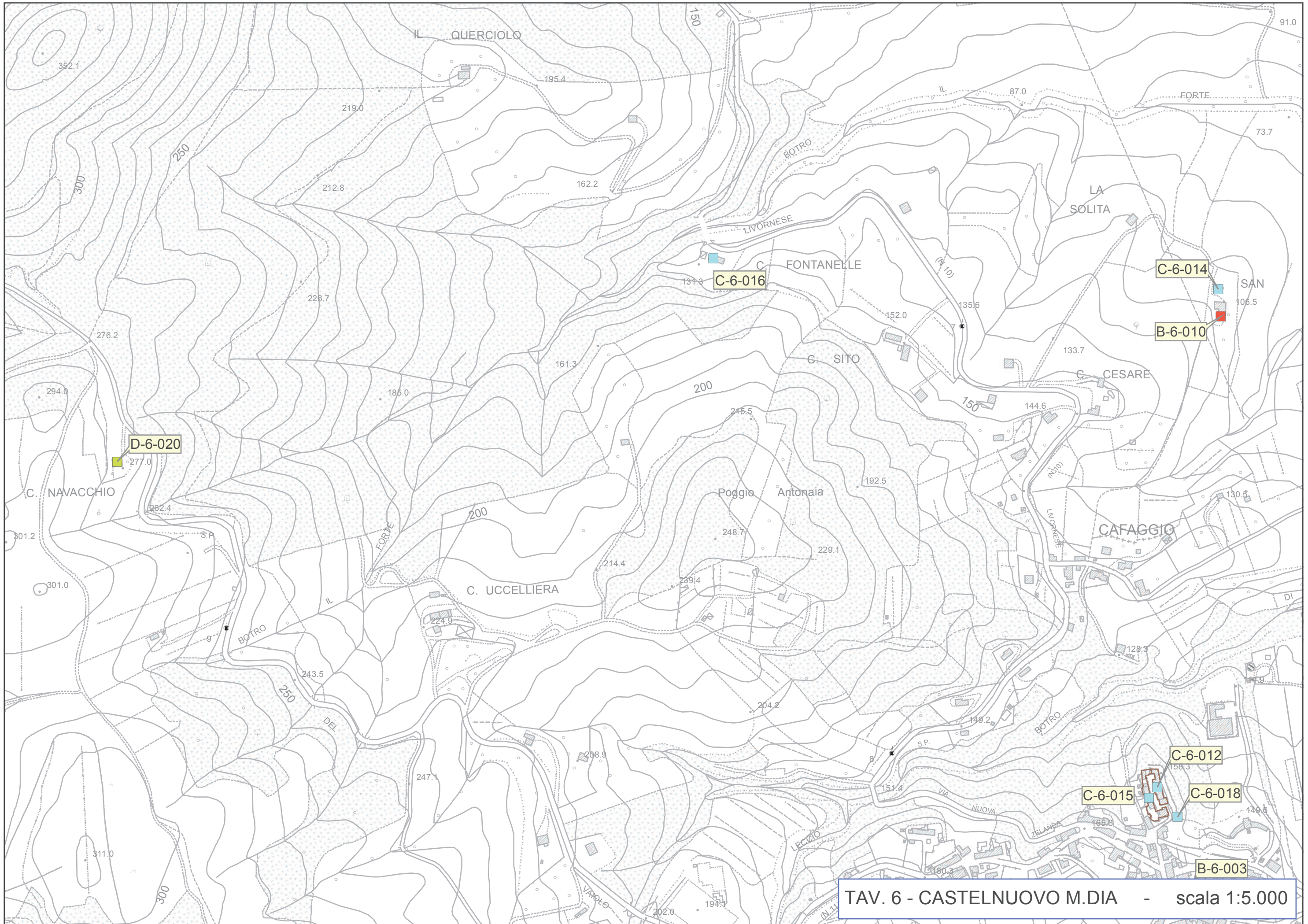
TAV. 4 - GABBRO - scala 1:5.000





TAV. 5 - CASTELNUOVO M.DIA - scala 1:5.000



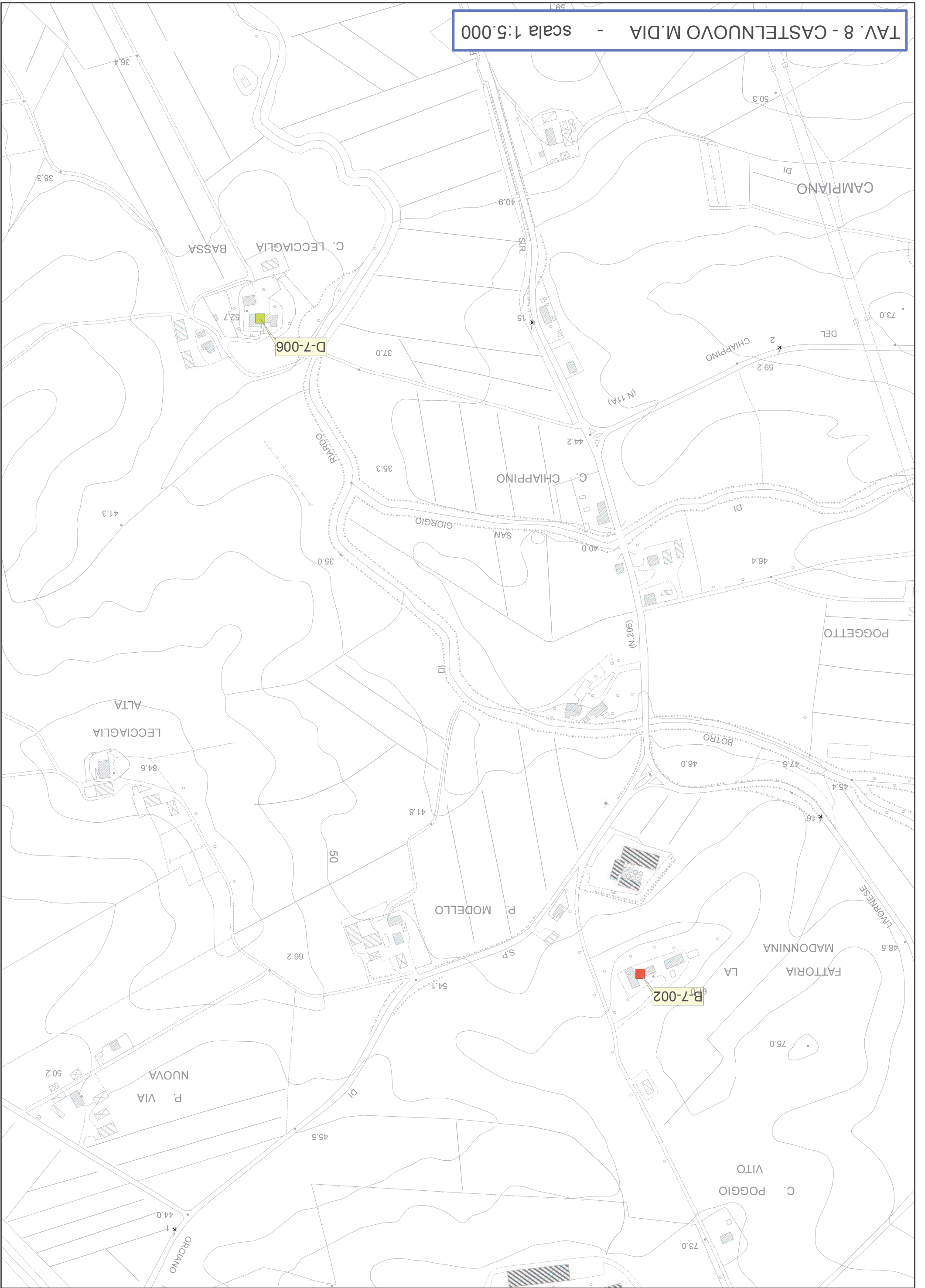


TAV. 6 - CASTELNUOVO M.DIA - scala 1:5.000

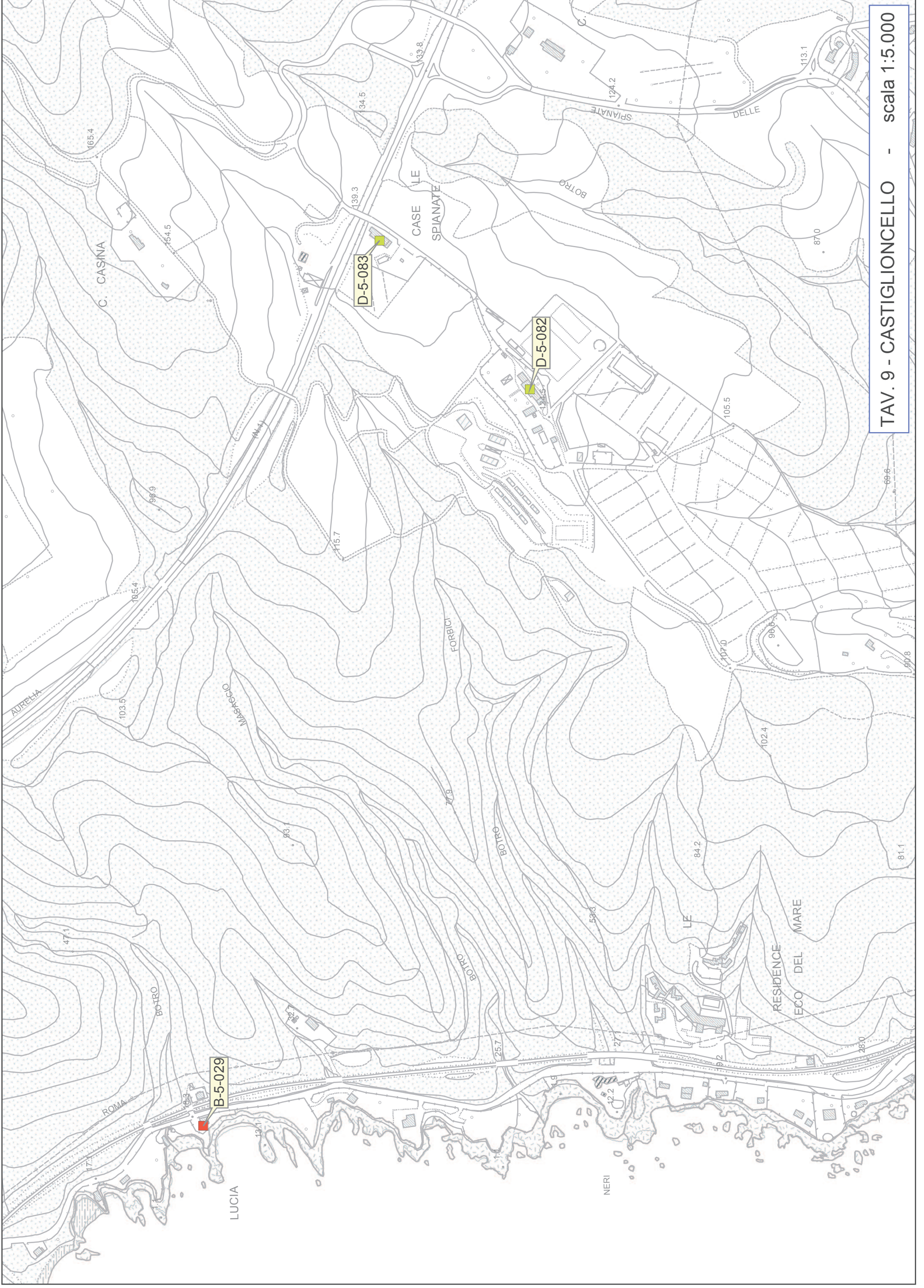












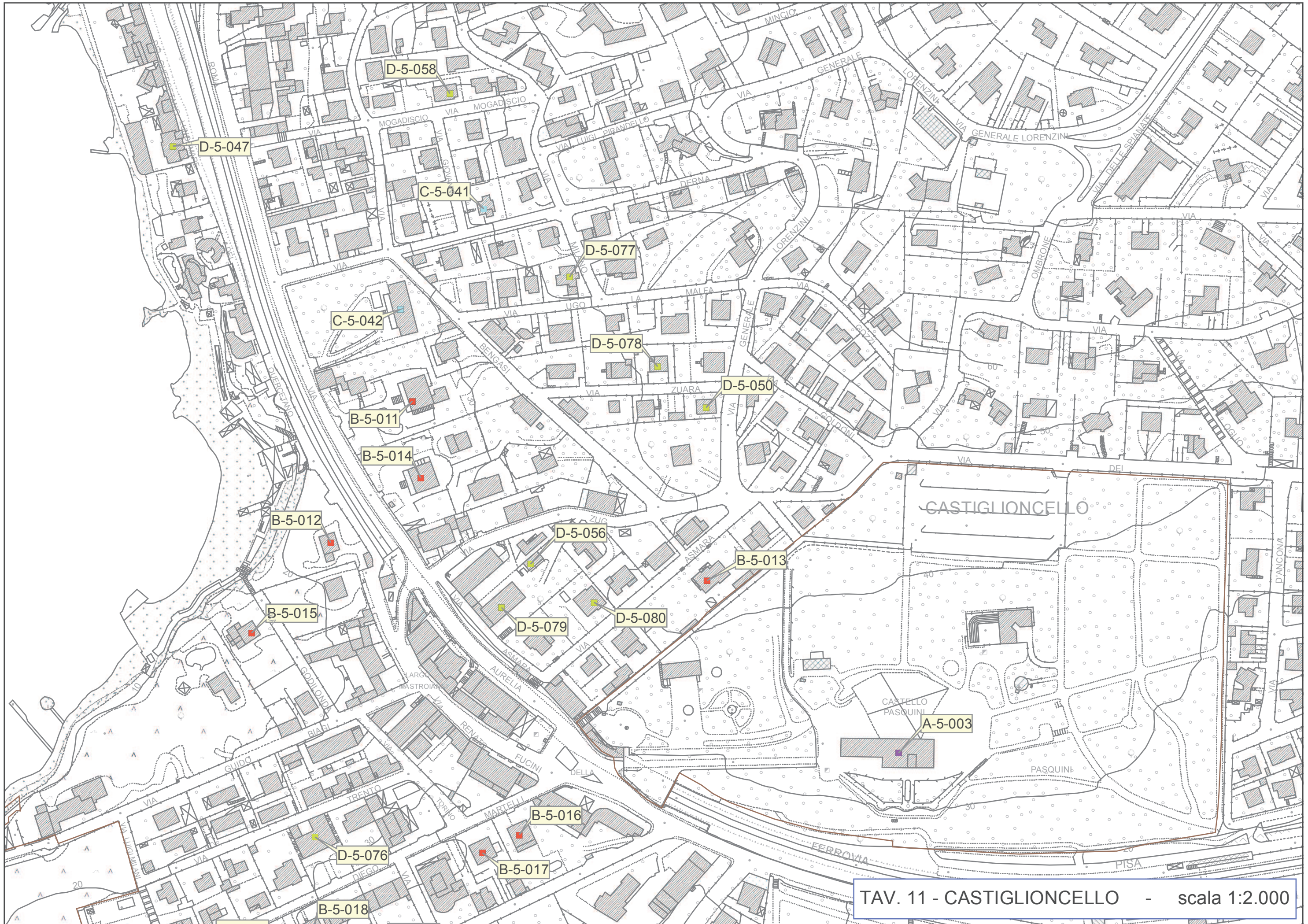
TAV. 9 - CASTIGLIONCELLO - scala 1:5.000





TAV. 10 - CASTIGLIONCELLO - scala 1:2.000





TAV. 11 - CASTIGLIONCELLO - scala 1:2.000













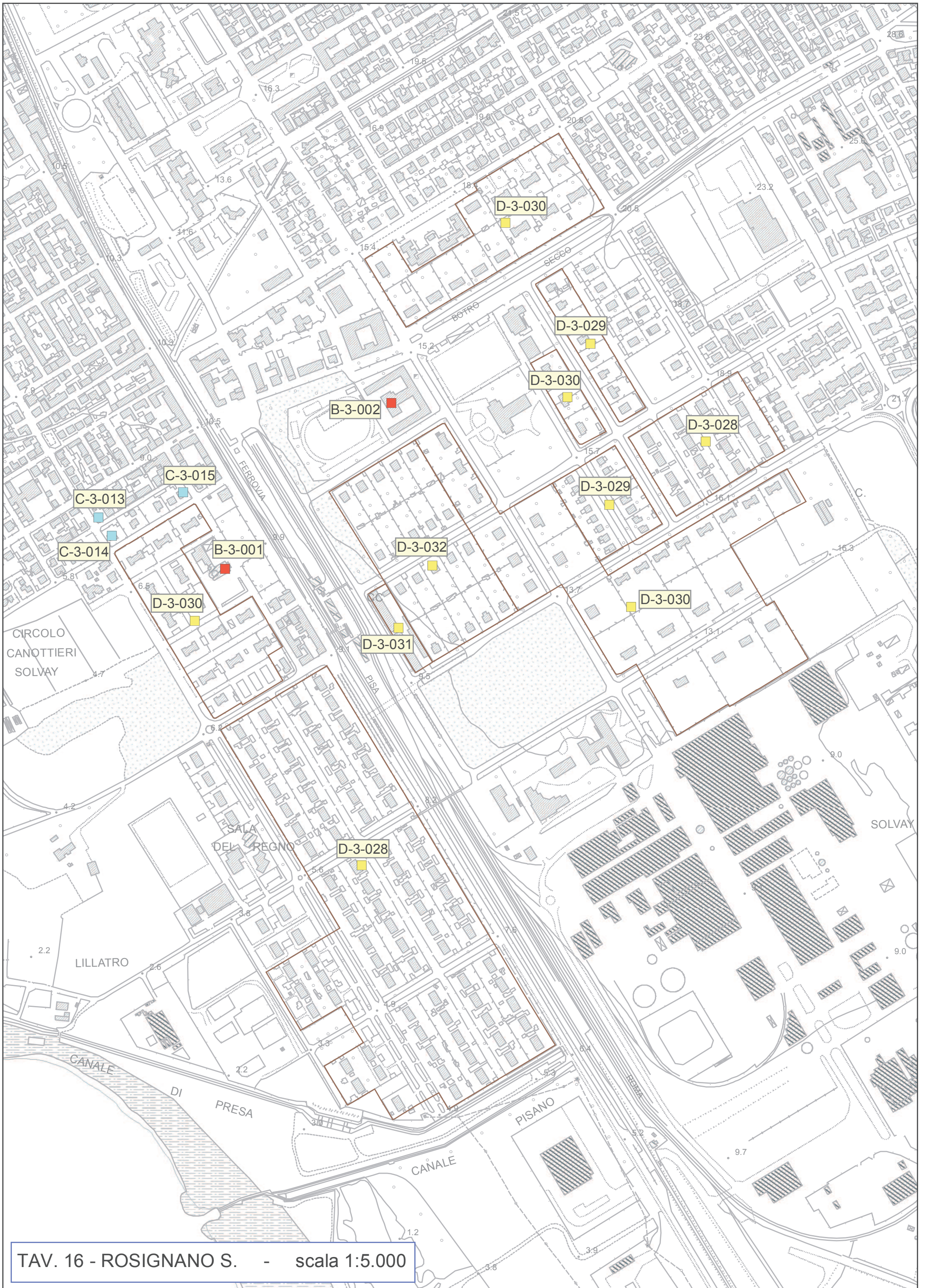
TAV. 14 - CASTIGLIONCELLO - scala 1:2.000





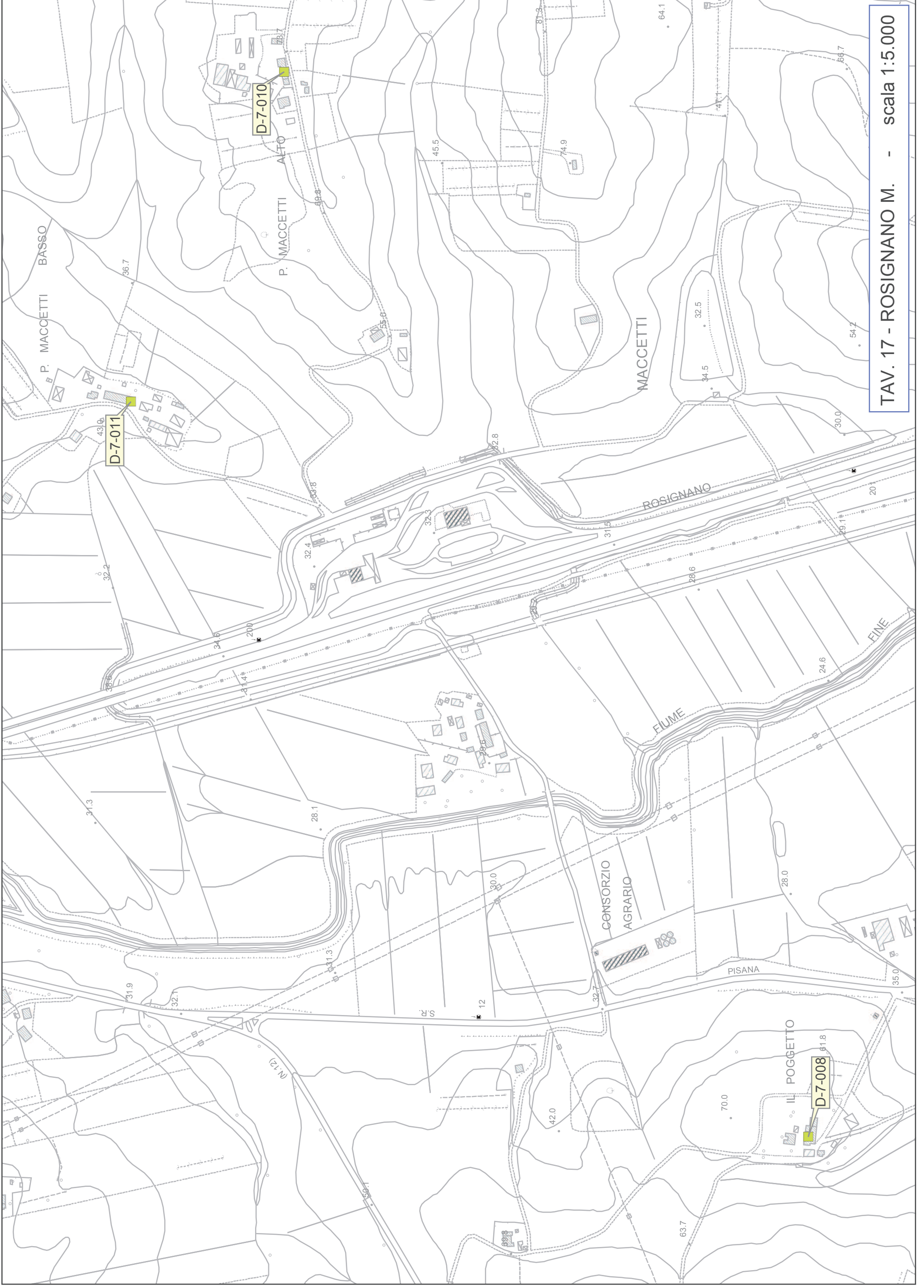
TAV. 15 - ROSIGNANO S. - scala 1:2.000





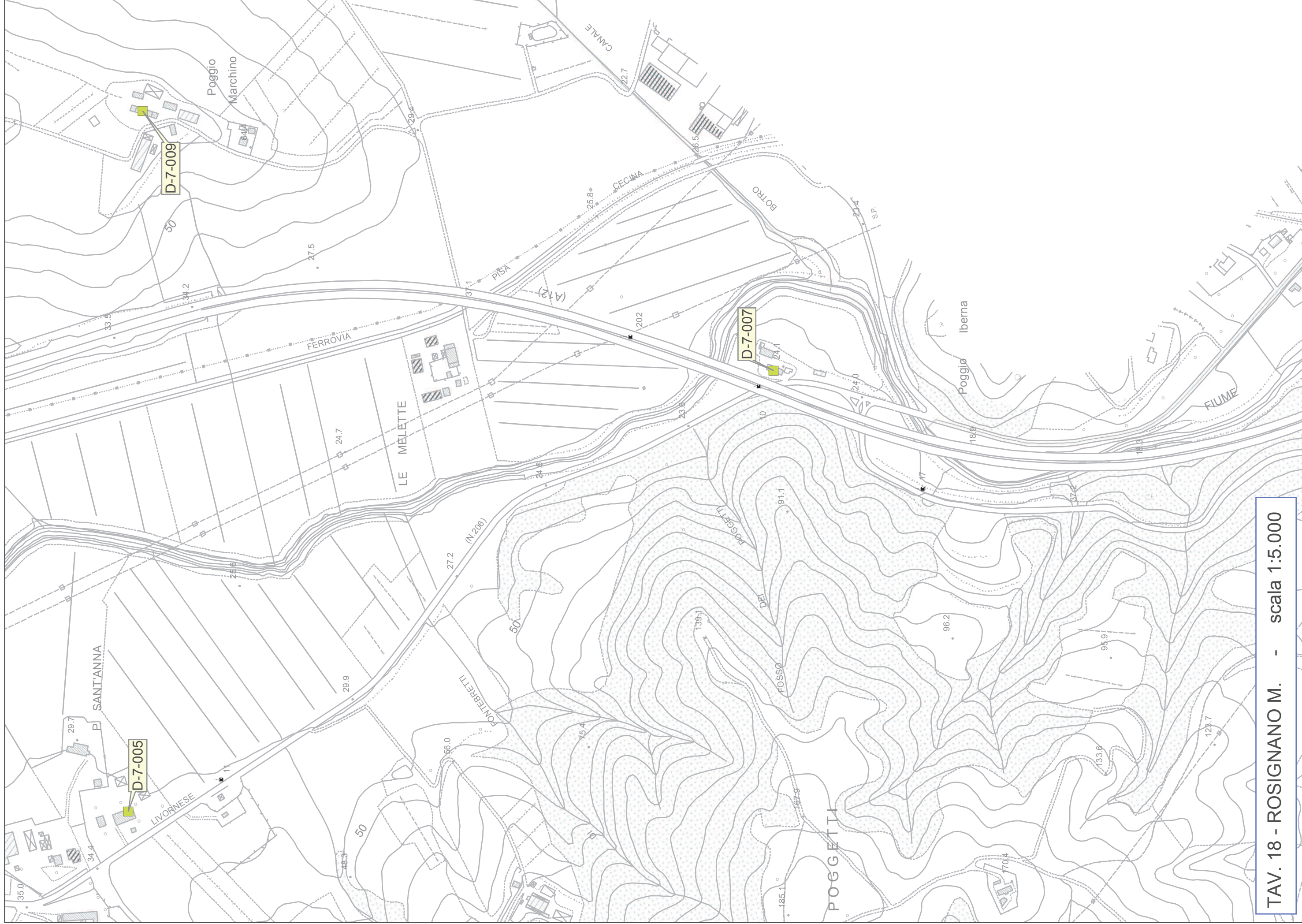
TAV. 16 - ROSIGNANO S. - scala 1:5.000





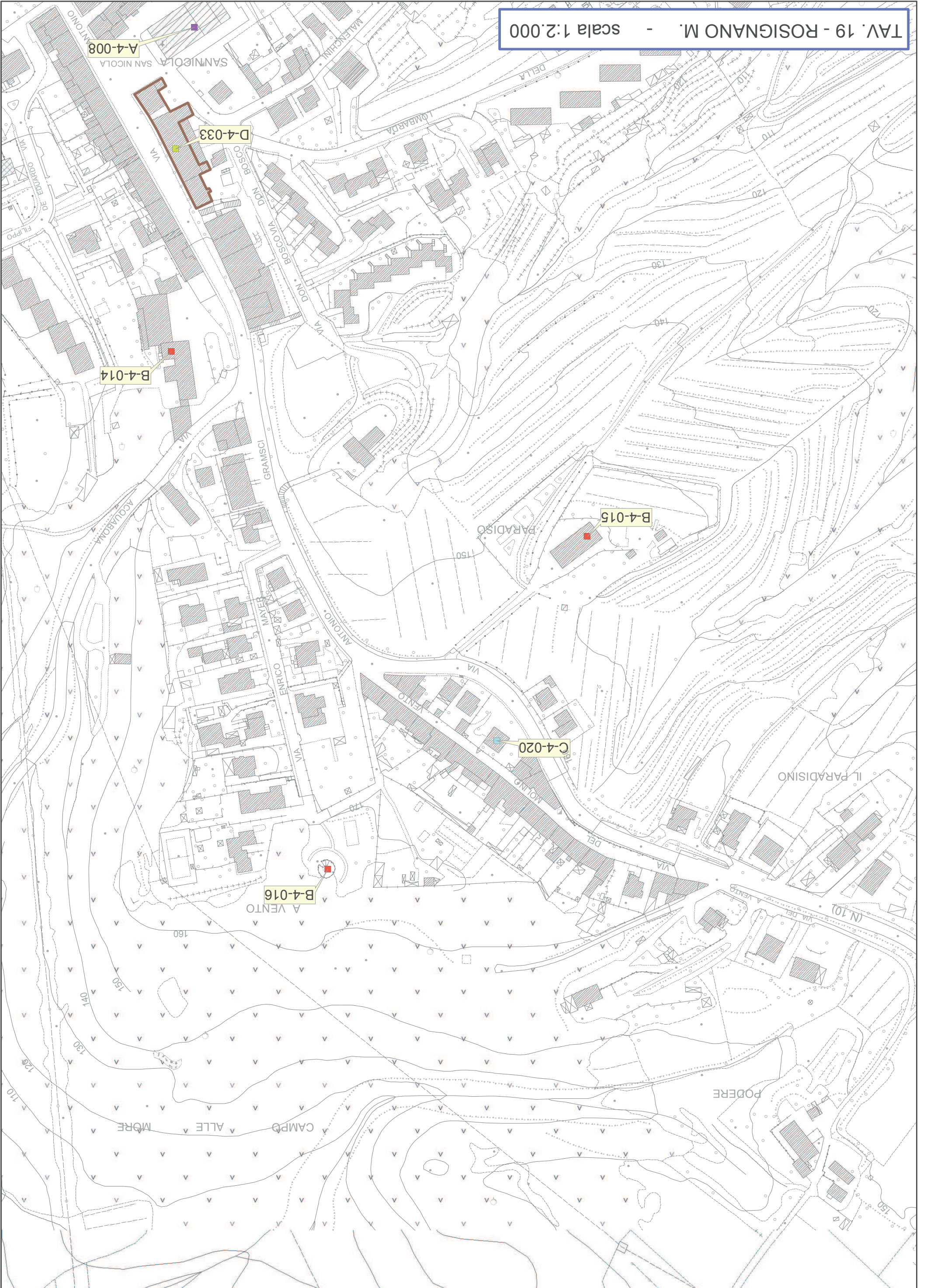
TAV. 17 - ROSIGNANO M. - scala 1:5.000



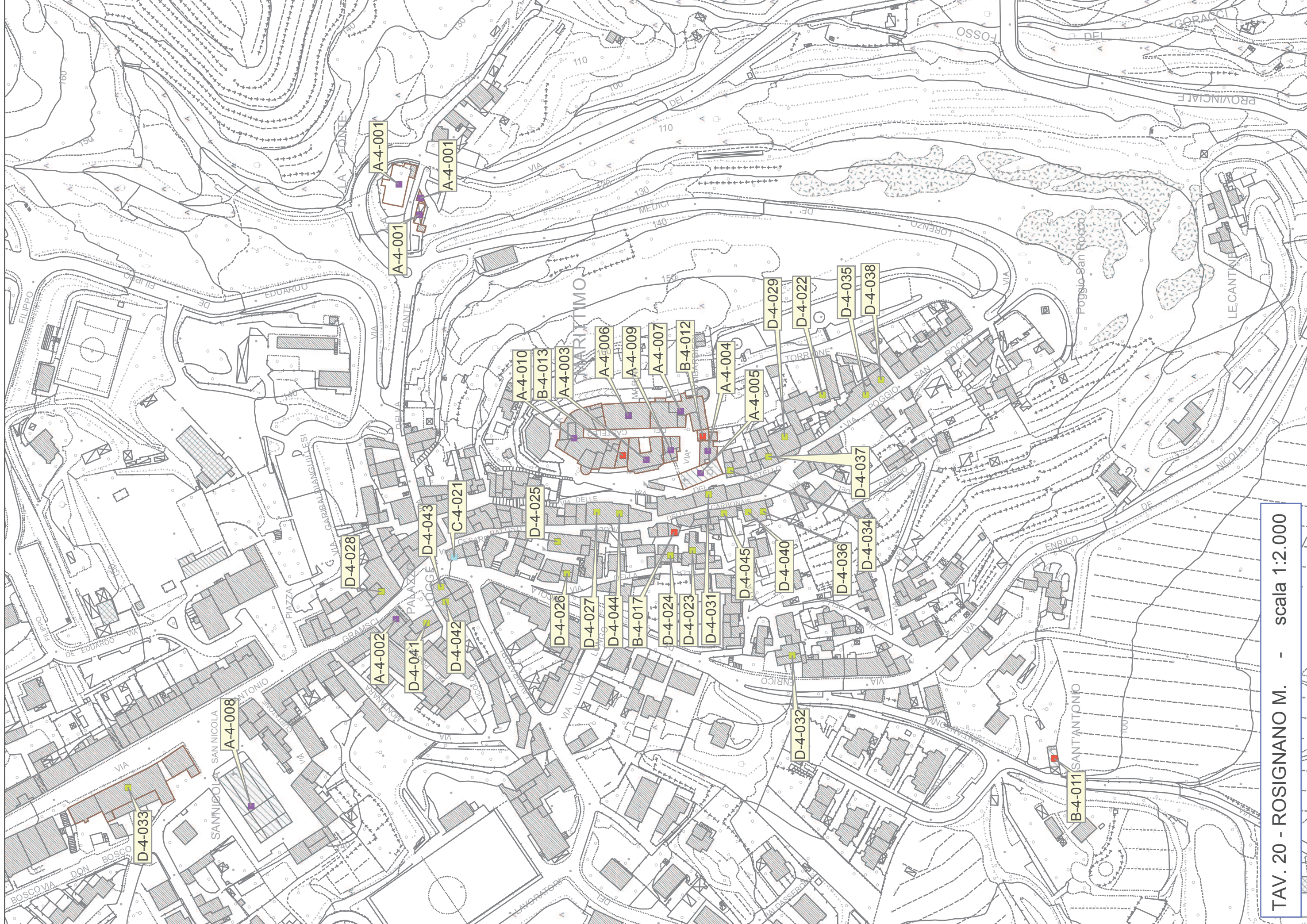


TAV. 18 - ROSIGNANO M. - scala 1:5.000



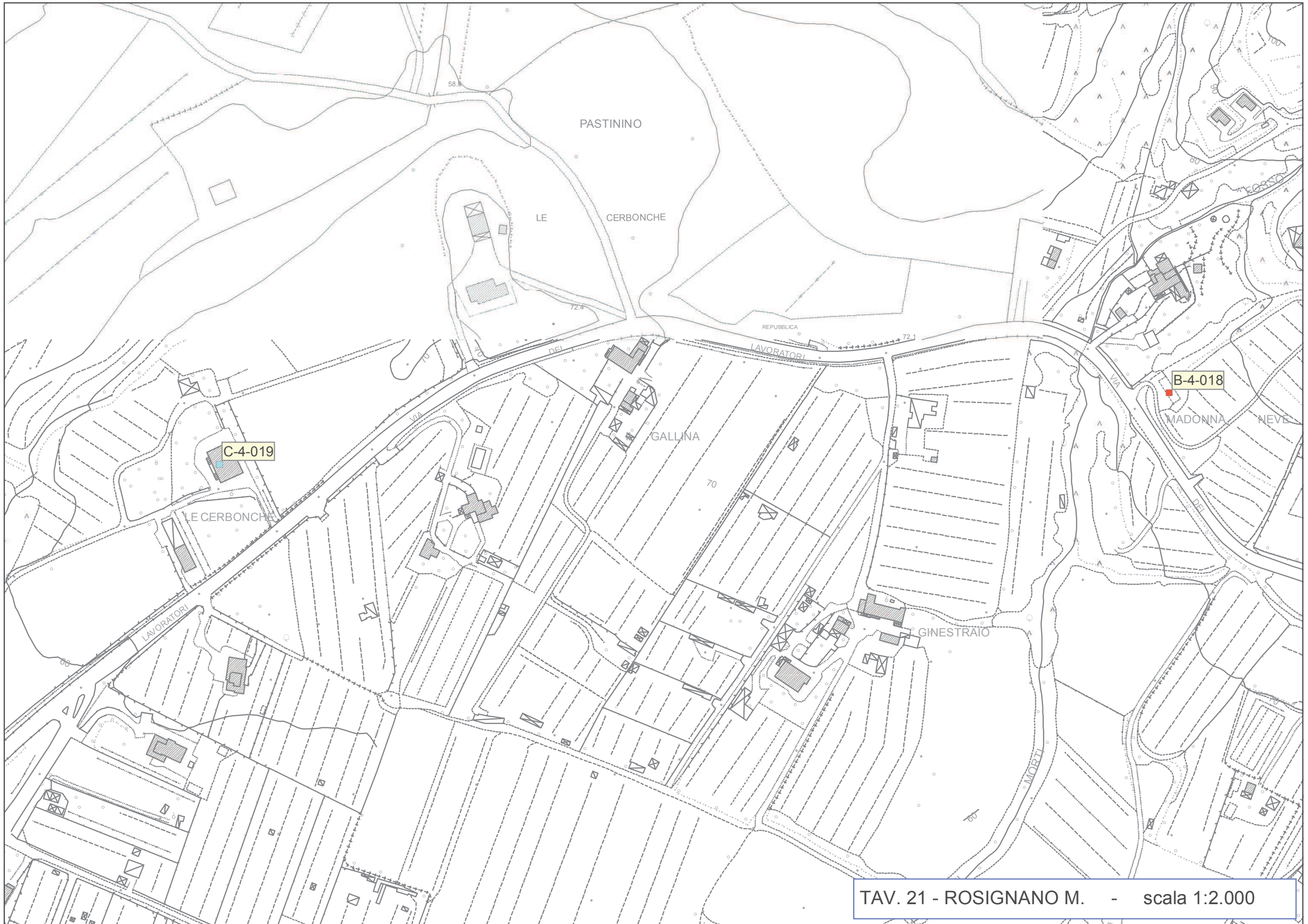






TAV. 20 - ROSIGNANO M. - scala 1:2.000





TAV. 21 - ROSIGNANO M. - scala 1:2.000





TAV. 22 - ROSIGNANO M. - scala 1:5.000





TAV. 23 - ROSIGNANO S. - scala 1:5.000





TAV. 24 - VADA - scala 1:5.000









TAV. 26 - VADA - scala 1:5.000





TAV. 27 - VADA - scala 1:5.000





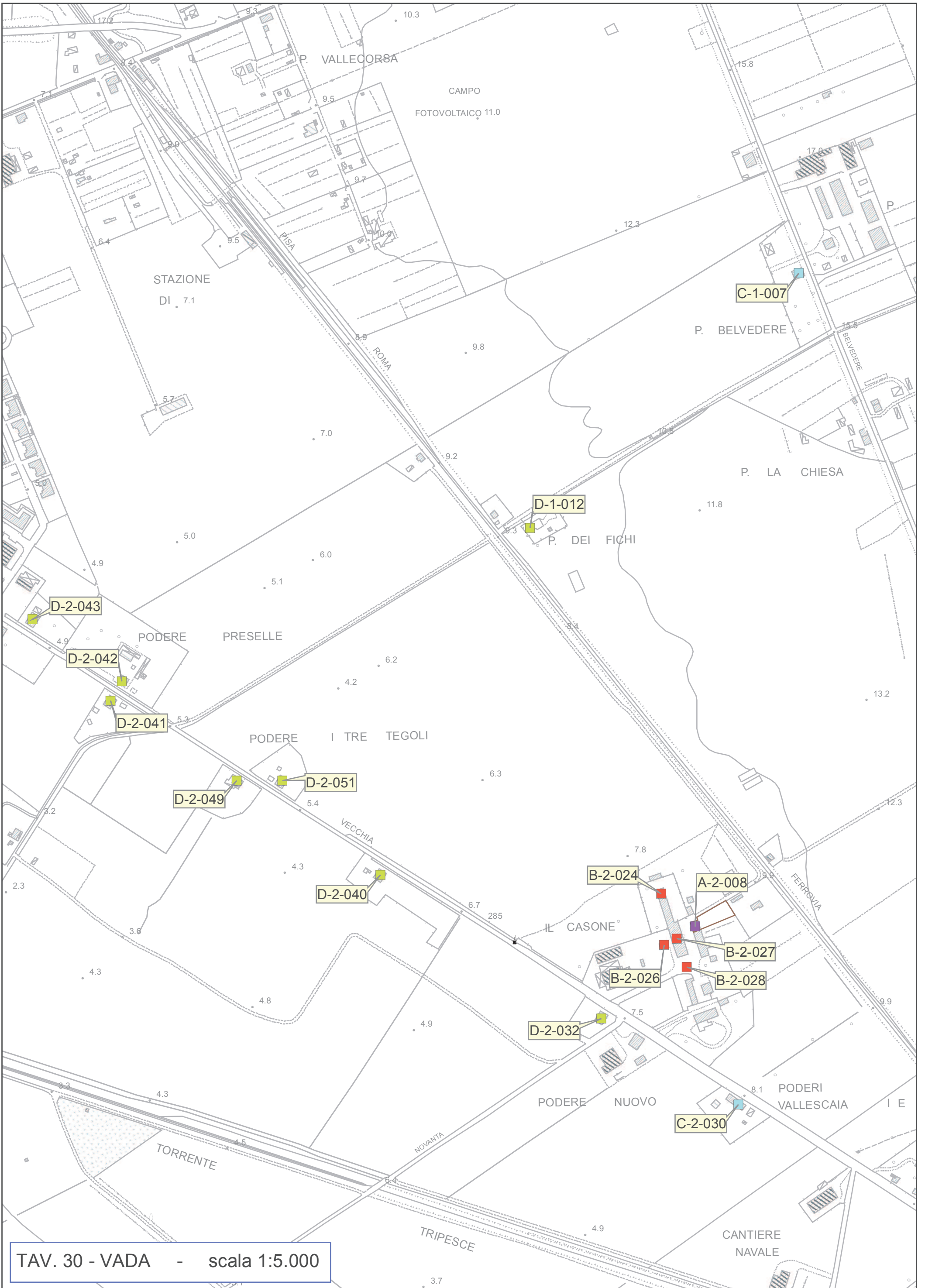
TAV. 28 - VADA - scala 1:2.000





TAV. 29 - VADA - scala 1:2.000





TAV. 30 - VADA - scala 1:5.000





TAV. 31 - VADA - scala 1:5.000









TAV. 33 - VADA - scala 1:5.000